



TelePatch™
Monitoring System
Holter Patient Guide



The Most Advanced
& Convenient Ambulatory
Cardiac Monitoring System



To view ReactDx's Notice of Privacy Practices, Patient Rights and Responsibilities, and Assignment of Benefits/Patient Consent, please visit www.ReactDx.com/Notices. If you would like a written copy, please call (877) 996-5553

Table of Contents

Welcome To TelePatch	2
TelePatch Holter Monitoring Kit Contents..	3
Preparing Your Skin.....	4
Putting the Device On	5
Starting Your Holter Study	6
Lighting and Sound Guide	7
Replacing the Electrode Patch.....	8
Changing the Battery.....	9
Troubleshooting	10
Do's and Don'ts	11
Making a Symptom Recording	12
Procedure Ending Instructions.....	13
Returning the Monitor Kit.....	Back Cover



ESPAÑOL

Encuentra Esta Guía en Español
ReactDx.com/es/GuiaHolter1-1

Welcome To TelePatch

The most advanced heart monitoring system

Your doctor has prescribed a Holter study using the ReactDx TelePatch Monitor.

This guide will walk you through hooking up the monitor, using it during daily activities, recording symptoms when they occur, and returning the monitor at the end of the study. This study will monitor your heart's electrical activity and record any heart irregularities, called arrhythmias. Your doctor will review and interpret the results of this study.

ECG recordings are sent to ReactDx, where highly trained Certified Cardiac Technicians analyze your ECG data and create reports for your doctor. You should wear the monitor and go about your normal daily activities; you can even shower with the Patch. If at any point you feel a symptom or irregular heartbeat, just press the Symptom button. It is a simple process and should not interfere with your daily activities.

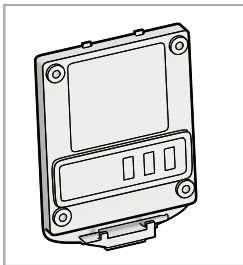
Begin wearing your monitor immediately, and you will wear the monitor 24-hours a day for the length of your prescribed test. The instructions included in this Patient Guide will guide you on how to use the monitor. At the end of the study, take the device off and follow the instructions for promptly returning it.

**If you have questions after reviewing this guide,
please contact ReactDx at (877) 996-5553 option 2
for Cardiac Monitoring and option 2 for Patient Support.**

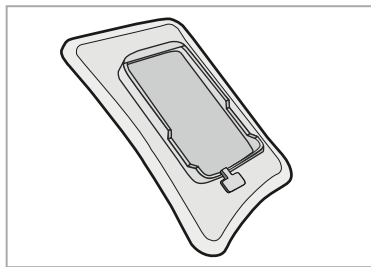
TelePatch Holter Monitoring Kit Contents



Universal Pendant



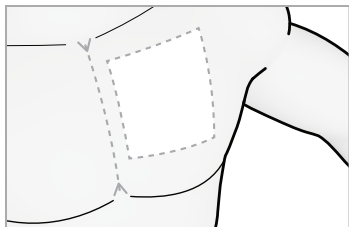
Battery(ies)



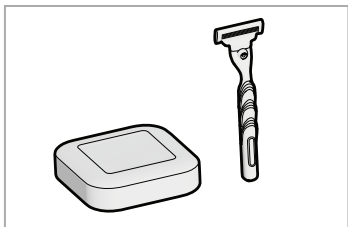
Electrode Patch(es)

- ! Note: The number of Patches and Batteries included in your kit is dependent upon the prescribed duration of your Holter study.
- A Patient Diary may also be included in your Kit.

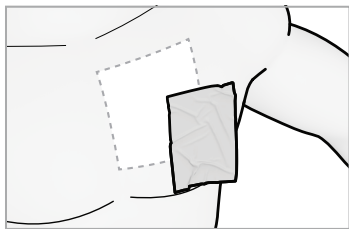
Preparing Your Skin



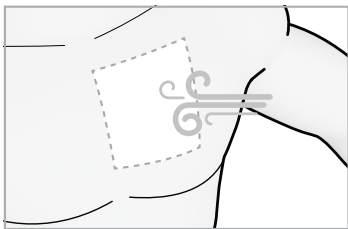
1 Find Location.



2 Wash with Plain Soap (No Lotion/Oil), Shave (if needed) and Dry.



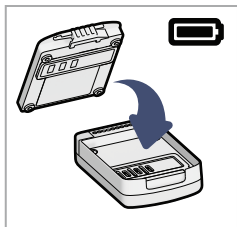
3 Wipe Location with the Skin Prep Pad.



4 Dry 60 Seconds.

- !** The location for the Patch is just left of the center of the chest, as highlighted. All of the materials used are latex-free. The Skin Prep Pad is included in the Patch packaging. If you have known skin sensitivities, please contact your physician.

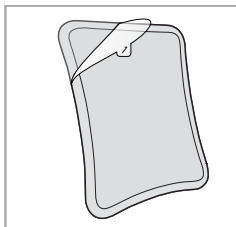
Putting the Device On



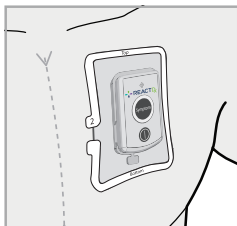
5 Insert Battery.



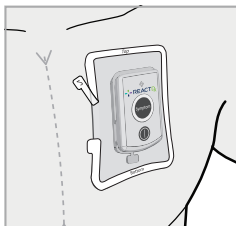
6 Insert Pendant.



7 Peel Backing.



8 Adhere to Chest.



9 Remove White Outer Ring.



Do Not Move the Patch Over to Shoulder Area.

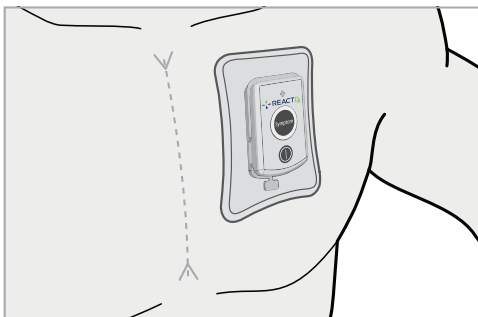
- !** Align the Patch just left of the center of your chest. Avoid your shoulder fold. Take care not to insert the Pendant upside down. Be sure the slightly curved end of the Pendant — the end at the bottom below the Power Button — is flush against the matching beveled part of the Cradle.

Starting Your Holter Study



Flashing Light

Follow these Steps after the Electrode Patch is Attached in the Proper Position on the Chest.



1 Confirm the Pendant is **ON**. If it is not, press the power button to turn it on.

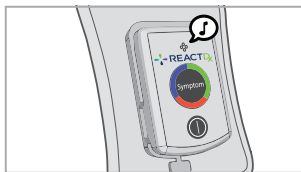
2 Green Light Flashes Every 2 Seconds when the Pendant is On and Monitoring.

! The Holter study will begin when the Pendant is powered on and inserted into the Patch. Confirm the GREEN light is flashing SLOWLY. If the monitor displays any other flashing lights or audible sounds, please **chat with us online at www.ReactDx.com or call ReactDx's Patient Support at (877) 996-5553 option 2 for Cardiac Monitoring, option 2 for Patient Support.**

Lighting and Sound Guide



Flashing Light



Power **ON**



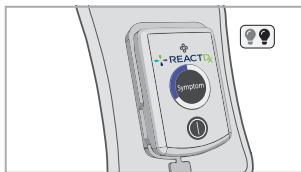
Power **OFF**



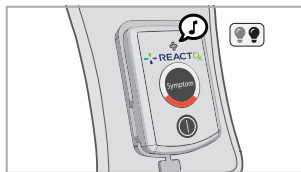
Monitoring - Good



Symptom Press



Check Pendant



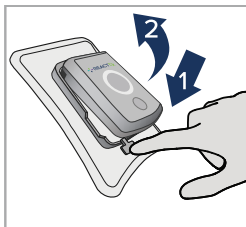
Change Battery

! If the Check Pendant BLUE light starts flashing, remove the Pendant, wipe front and back of the Pendant and inside of the Patch Cradle with a clean dry cloth, and insert the Pendant back in securely.

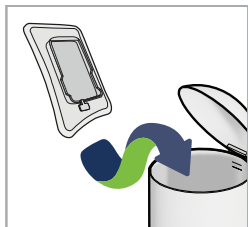
Replacing the Electrode Patch



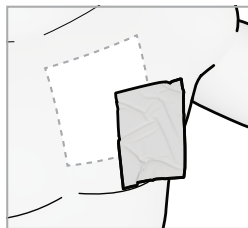
1 Remove Patch.



2 Remove Pendant.



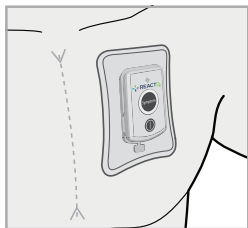
3 Discard Patch Only.



4 Wipe Location with Skin Prep Pad.



5 Insert Pendant.



6 Place on Chest and Ensure Pendant is **ON**.

! You should have enough supplies in your Kit to last through the end of your Study. Please follow these instructions carefully for proper application. If you have questions, please **chat with us online at www.ReactDx.com or call ReactDx's Patient Support at (877) 996-5553 option 2 for Cardiac Monitoring, option 2 for Patient Support.**

Changing the Battery



Flashing Light



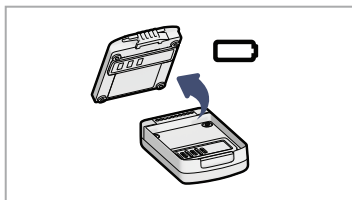
Charged Battery and Monitoring.



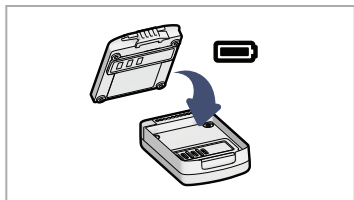
Low Battery.



1 Power Off.



2 Remove Battery from Pendant.



3 Add Charged Battery to the Pendant.



4 Insert Pendant into the Patch. Ensure the Pendant is **ON**.

Troubleshooting

Moisture can sometimes build up inside the Patch Cradle, especially if you have showered with the Pendant on. Follow these steps if your Pendant is blinking Blue, indicating that the Pendant needs to be checked.



If the Pendant's Blue Light is blinking, follow these steps.



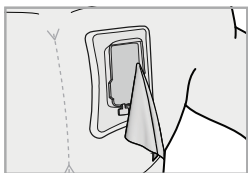
Do Not Submerge.



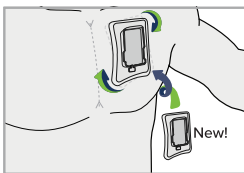
1 Remove Pendant.



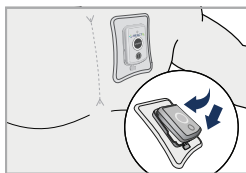
2 Use Alcohol Wipe to Clean Gold Electrodes on Back.



3 Wipe Inside Cradle with Alcohol Wipe.



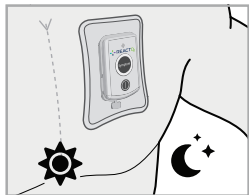
4 If the Patch is Loose, Replace It.



5 Insert Pendant and Ensure Pendant is **ON**.

! The Pendant is water-resistant, but not waterproof. You may shower with the Pendant on, but please do not submerge it.

Do's and Don'ts



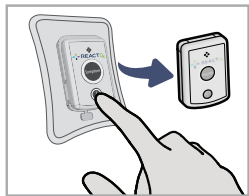
Wear Day and Night.



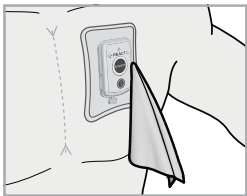
Fully Snap into Cradle.



Do Not Discard Pendant.



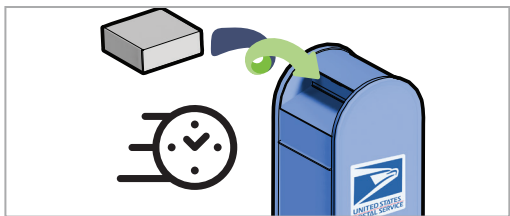
Turn Off Before
Changing Battery.



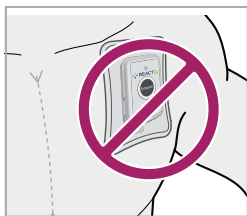
Dry Pendant and Patch.



Do Not Submerge.

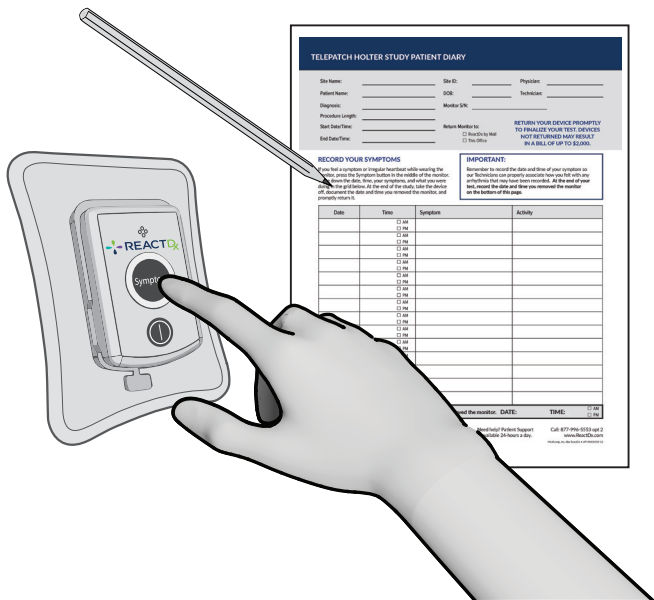


Return Promptly— Leave Kit for Mail Carrier to
Pick Up in any USPS Mailbox.



Do Not Move Patch
Over to Shoulder Area.

Making a Symptom Recording

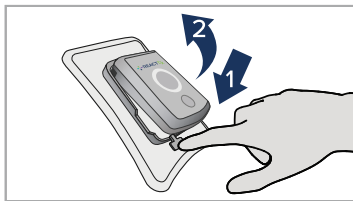


Remember: When you experience a symptom, **press the Symptom button**. Record the date, time, what you were doing, and what you felt for each symptom experienced in the **Patient Diary** or on a piece of paper that includes your name and date of birth. **Return your notes in the Kit promptly after the study is completed.**

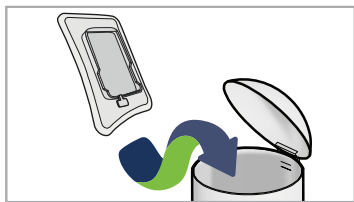
Procedure Ending Instructions



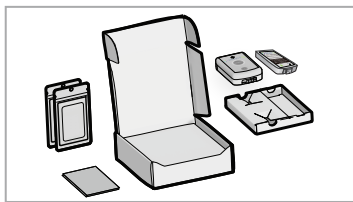
1 Remove the Patch with the Pendant from your Chest.



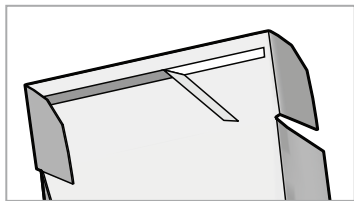
2 Remove the Pendant.



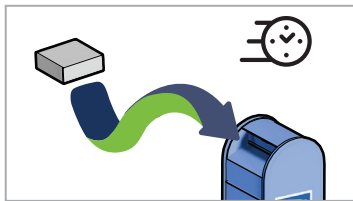
3 Discard the Patch Only.



4 Insert All Contents / Unused Supplies Back into the Box.



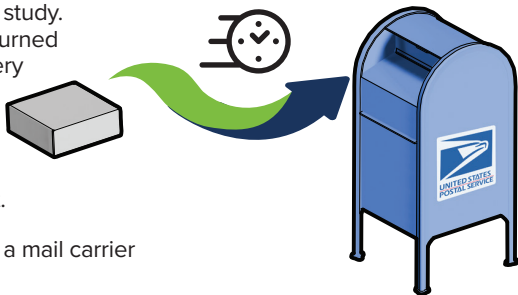
5 Close and Seal the Box.



6 Promptly Leave for a Mail Carrier in any USPS Mailbox.

Returning the Monitor Kit

Return your Kit promptly so your doctor can finalize your study. Devices that are not returned could slow report delivery to your doctor, result in a bill for the unreturned equipment, and delay helping the next patient.



Leave the sealed kit for a mail carrier in any USPS mailbox.



Please take a moment to fill out our patient survey at www.ReactDx.com/survey. Your input will help us provide patients, like yourself, the best possible experience.

Your Holter test cannot be completed until the Kit is returned. Remember to return the Kit immediately after the procedure is complete. Unreturned devices may result in a bill of up to \$2000 to replace the device.



Medicomp, Inc.
dba ReactDx has earned
the Joint Commission's
Gold Seal of Approval.



(877) 996-5553 • www.ReactDx.com • Info@ReactDx.com

©2023 Medicomp, Inc. dba ReactDx

QSG0000727-02