



## TelePatch™ Universal Pendant with Patient Cable

The Most Advanced & Convenient  
Ambulatory Cardiac Monitoring System



# Notice of Privacy Practices



To view ReactDx's Notice of Privacy Practices, Patient Rights and Responsibilities, and Assignment of Benefits/Patient Consent, please visit [www.ReactDx.com/Notices](http://www.ReactDx.com/Notices).

If you would like a written copy, please call (877) 996-5553.

# Guía en Español



 ESPAÑOL  
Encuentra Esta Guía en Español  
[ReactDx.com/es/GuiaHolterCable](http://ReactDx.com/es/GuiaHolterCable)

# Table of Contents

Welcome To TelePatch .....2

TelePatch Monitoring Kit Contents ..... 3

Preparing Your Skin..... 4

Applying Electrodes ..... 4-5

Starting Your Study ..... 6

Making a Symptom Recording ..... 7

Lights and Sounds Guide ..... 8

Replacing Electrodes ..... 9

Changing the Battery ..... 10

Do's and Don'ts ..... 11

Troubleshooting ..... 12

End of Procedure Instructions ..... 13

Returning the Monitor Kit..... Back Cover

# Welcome to TelePatch

## The most advanced heart monitoring system

Your doctor has prescribed an ambulatory cardiac monitoring study using the ReactDx TelePatch Monitor.

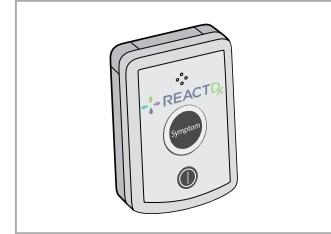
This guide will walk you through hooking up the monitor, using it during daily activities, recording symptoms when they occur, and returning the monitor at the end of the study. This study will monitor your heart's electrical activity and record any heart irregularities, called arrhythmias. Your doctor will review and interpret the results of this study.

ECG recordings are sent to ReactDx, where highly trained Certified Cardiac Technicians analyze your ECG data and create reports for your doctor. You should wear the monitor and go about your normal daily activities. If at any point you feel a symptom or irregular heartbeat, just press the Symptom button either on the Pendant. It is a simple process and should not interfere with your daily activities.

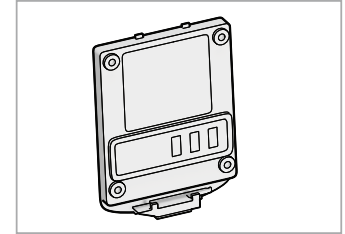
Begin wearing your monitor immediately. Wear the monitor 24-hours a day for the length of your prescribed test. The instructions included in this Patient Guide will instruct you on how to use the monitor. At the end of the study, take the device off and follow the instructions for promptly returning it.

**If you have questions after reviewing this guide, please contact ReactDx at (877) 996-5553.**

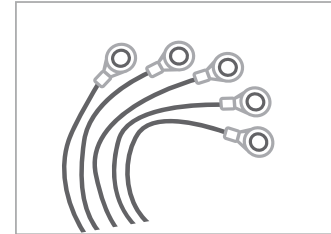
## Monitoring Kit Contents



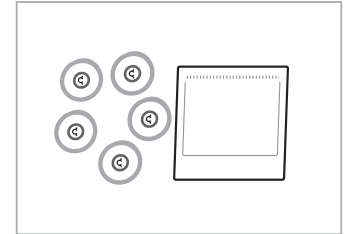
Universal Pendant



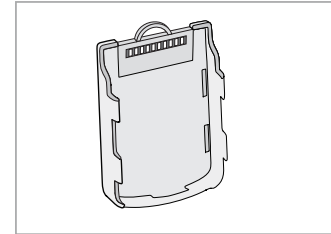
Battery(ies)



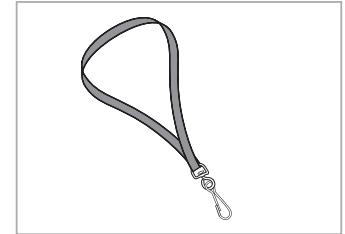
5-Lead Patient Cable



Packet of Electrodes



Cable Cradle



Lanyard

# Preparing Your Skin

Using the illustrations on the right as a guide, choose areas of the chest that are flat and not very muscular. Avoid skin folds or creases, irritated skin and scars.

▶ Wash with Plain Soap  
(No Lotion/Oil) Shave (if needed) and Dry



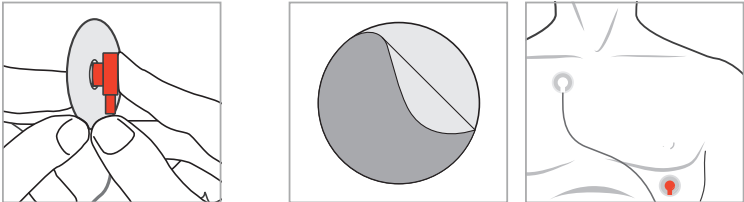
▶ Wipe Location with Skin Prep Pad



▶ Dry 60 Seconds



# Applying Electrodes




- 1

Open a packet of Electrodes. Snap the Electrodes onto all the color terminals of the Patient Cable.
- 2


One by one, peel the backing from an electrode and apply it to your chest as shown in the illustrations on the right. Be mindful of where each color terminal should be placed.

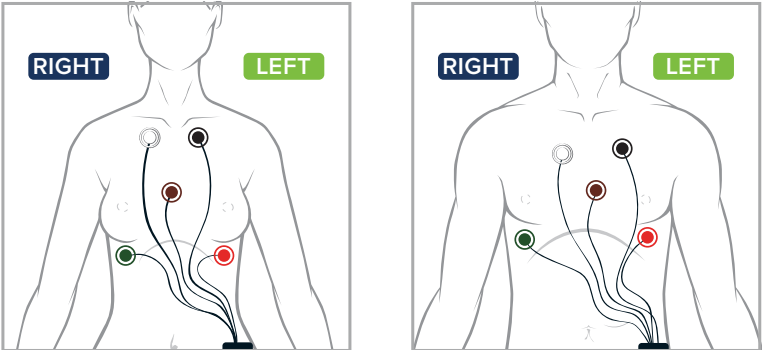
! Change the Electrodes every two days. When re-applied, change their location slightly to lessen skin irritation.

# Applying Electrodes



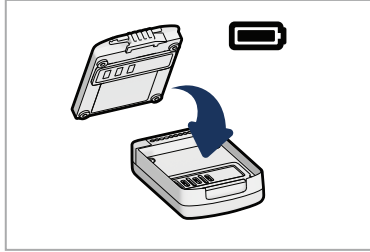
Remember, when looking in a mirror, your left and right sides will be reversed.





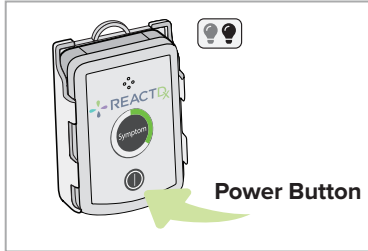
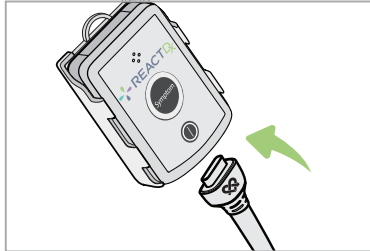
! **Tip.** Remember, “White on Right” when applying Electrodes. This will help you remember to always place the white electrode on the upper right side of your chest.

## Starting your Study



**1** Insert Battery. Slide the switch to the locked position.

**2** Insert the assembled Pendant into the Cable Cradle until you hear a click.



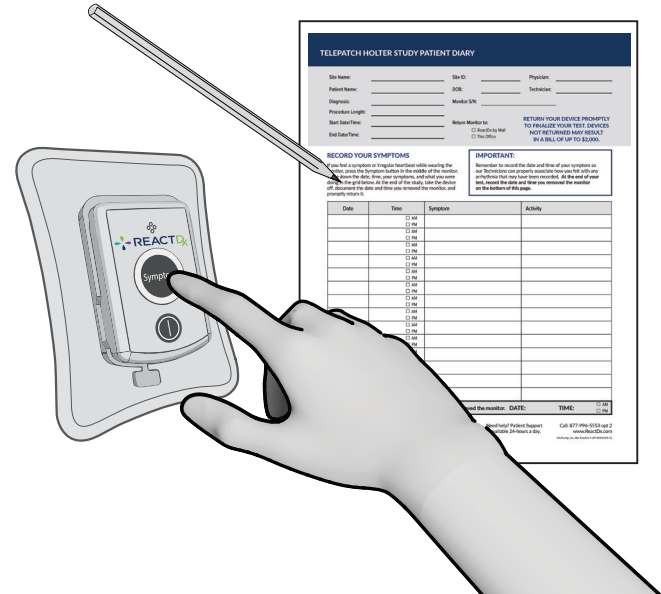
**3** Insert the Patient Cable into the base of the Cable Cradle.

**4** Confirm the Pendant is **ON**. A Green light flashes every four seconds when the Pendant is on. If the Pendant is off, press the **Power** button to turn it on.

**!** Take care not to insert the Pendant upside down in the Cable Cradle. The Cable Cradle may be worn on the included breakaway lanyard or kept in a pocket. Make sure the Patient Cable stays firmly attached.


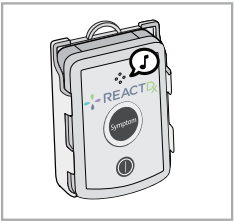

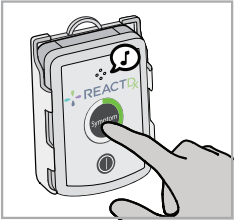

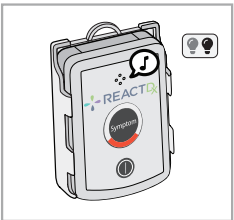
## Making a Symptom Recording

The Holter study begins when the Pendant is powered on and inserted into the Cable Cradle. Confirm the **GREEN** light is flashing **SLOWLY**. If the Pendant displays any other flashing lights or audible sounds, please call **ReactDx's Patient Support at (877) 996-5553** or **chat with us online at [www.ReactDx.com](http://www.ReactDx.com)**.



**!** *Remember:* When you experience a symptom, **press the Symptom button** on the **Pendant** and record what you were feeling and doing on the Patient Diary.

# Lights and Sounds Guide


Power <b>ON</b>		Power <b>OFF</b>	
Monitoring <b>GOOD</b>		Symptom <b>PRESS</b>	
Check <b>PENDANT</b>		Change <b>BATTERY</b>	

! If the Check Pendant BLUE light starts flashing, remove the Pendant from the Cable Cradle, wipe front and back of the Pendant and inside of the Cable Cradle with a clean dry cloth. Insert the Pendant securely.

# Replacing Electrodes



Change the Electrodes every two days


- ▶ Be sure to **clean and prep** skin before applying new Electrodes.  

- ▶ When re-applying, **change their locations** on your chest slightly to lessen skin irritation.
- ▶ **Review the placement diagram** (on page 5) for proper placement.

# Sleeping

- Place the Cable Cradle with Pendant **beside you** with the wires extended as much as possible so that you don't roll over the Pendant,
- OR**
- Wear a nightshirt with a **breast pocket** and place the Pendant in the pocket.

! **DO NOT** wear the lanyard around your neck while sleeping.

# Changing the Battery

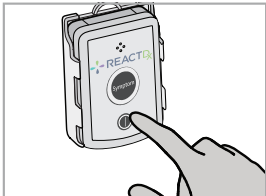
 Flashing Light



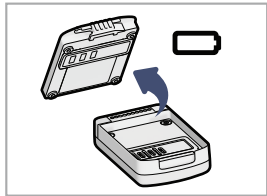
Charged Battery and monitoring.



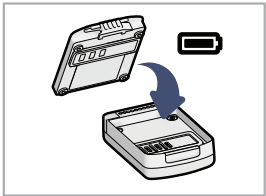
Low Battery.



**1** Power **OFF**.



**2** Remove Battery from Pendant.



**3** Add Battery to Pendant.



**4** Insert and ensure Pendant is **ON**.

# Do's and Don'ts

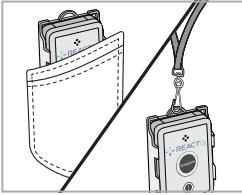
 **DO** Change the electrodes every two days

 **DO** Wear Day and Night

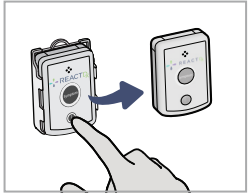
**DO NOT** shower, bathe, or swim with the Cable Cradle, Pendant, or Patient Cable, or get them wet in any other way.



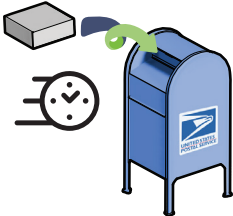
Fully insert in Cable Cradle.



Wear Cable Cradle on lanyard or in a pocket.



Turn **OFF** before changing Battery.

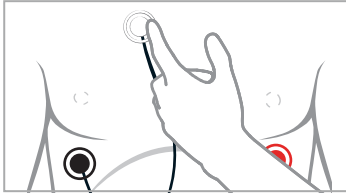


**Return Promptly**—leave kit for mail carrier to pick up in any USPS mailbox.

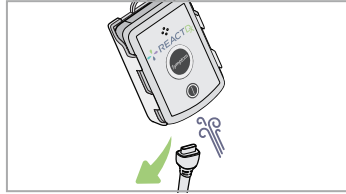
## Troubleshooting



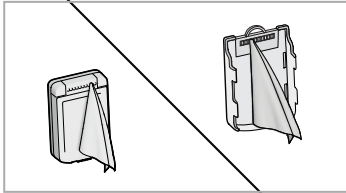
Change the electrodes every two days



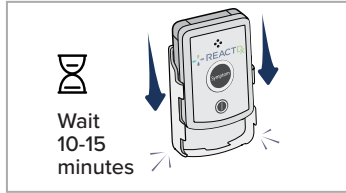
- 1** Ensure all Electrodes are secure and placement is correct.



- 2** Unplug cable from Cable Cradle, blow into port.



- 3** Wipe outside of Pendant and inside of Cradle with alcohol wipe.



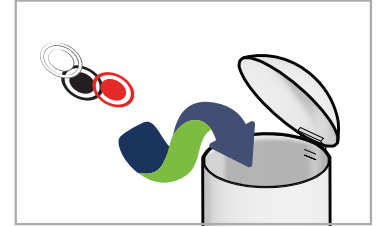
- 4** Reinsert and ensure the Pendant has returned to Monitoring.

**!** If you are unable to resolve an issue or if you need assistance with other error messages, **call ReactDx at (877) 996-5553 or chat with us online at [www.ReactDx.com](http://www.ReactDx.com).**

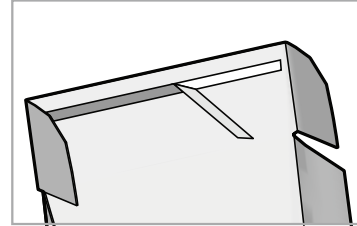
## End of Procedure Instructions



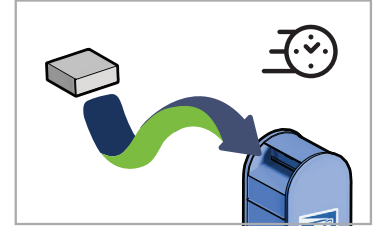
- 1** Remove Pendant from Cradle.



- 2** Unsnap Patient Cable from the lead terminals and discard Electrodes.



- 3** Insert all contents / unused supplies back into the box. Close and seal the box.



- 4** Promptly leave for mail carrier in any USPS mailbox.

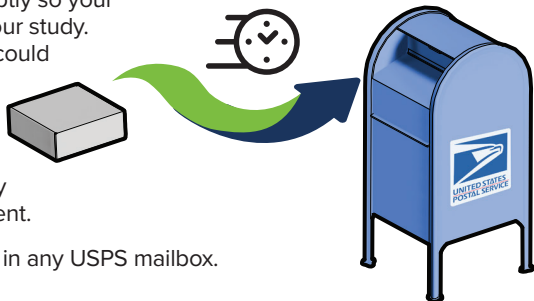
### Kit Packing List:

- |  |  |
|--|--|
| <input type="checkbox"/> Universal Pendant | <input type="checkbox"/> 5 Lead Cable      |
| <input type="checkbox"/> Batteries         | <input type="checkbox"/> Unused Electrodes |
| <input type="checkbox"/> Cable Cradle      | <input type="checkbox"/> Lanyard           |



# Returning the Monitor Kit

Return your Kit promptly so your doctor can finalize your study. Unreturned devices could slow delivery to your doctor, result in a bill for the unreturned equipment, and delay helping the next patient.



Leave for mail carrier in any USPS mailbox.



Please take a moment to fill out our patient survey at [www.ReactDx.com/survey](http://www.ReactDx.com/survey). Your input will help us provide patients, like yourself, the best possible experience.

**Your Holter test cannot be completed until the Kit is returned. Remember to return the Kit immediately after the procedure is complete. Unreturned devices may result in a bill of up to \$2000 to replace the device.**



Medicomp, Inc.  
dba ReactDx has earned  
the Joint Commission's  
Gold Seal of Approval.



(877) 996-5553 • [www.ReactDx.com](http://www.ReactDx.com) • [Info@ReactDx.com](mailto:Info@ReactDx.com)

©2024 Medicomp, Inc. dba ReactDx

QSGR000713-01