



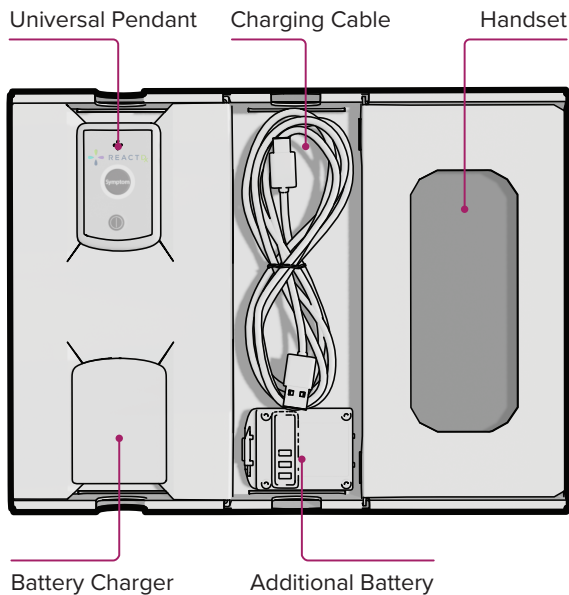
Easy Start
Patient Guide



TelePatch™ Monitoring System

The Most Advanced
& Convenient Ambulatory
Cardiac Monitoring System

Inside the Box



Find Electrode Patches Inside the Box.



ESPAÑOL

Encuentra Esta Guía en Español
ReactDx.com/es/GuiaTelePatchES

Table of Contents

Welcome To TelePatch	2
TelePatch Monitoring Kit Contents	3
Preparing Your Skin.....	4
Putting the Device On	5
Starting Your Study	6
Starting the Handset.....	7
Lighting and Sound Guide	8
Replacing Electrode Patch	9
Battery Changing & Charging	10
Showering and Drying.....	11
Do's and Don'ts	12
Making a Symptom Recording	13
Troubleshooting	14
Connecting the Monitor to Wi-Fi	16
Procedure Ending Instructions.....	17
Returning the Monitor Kit.....	Back Cover



Welcome To TelePatch

The most advanced heart monitoring system

Your doctor has prescribed an ambulatory cardiac monitoring study using the ReactDx TelePatch Monitor.

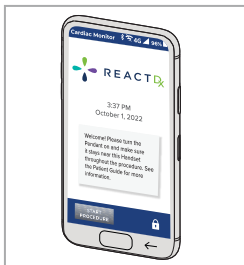
This guide will walk you through hooking up the monitor, using it during daily activities, recording symptoms when they occur, and returning the monitor at the end of the study. This study will monitor your heart's electrical activity and record any heart irregularities, called arrhythmias. Your doctor will review and interpret the results of this study.

ECG recordings are sent to ReactDx, where highly trained Certified Cardiac Technicians analyze your ECG data and create reports for your doctor. You should wear the monitor and go about your normal daily activities; you can even shower with the patch. If at any point you feel a symptom or irregular heartbeat, just press the Symptom button either on the Pendant or the Handset. It is a simple process and should not interfere with your daily activities.

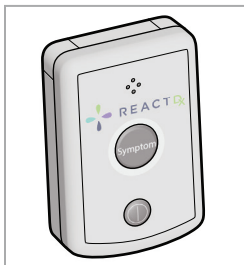
Begin wearing your monitor immediately, and you will wear the monitor 24-hours a day for the length of your prescribed test. The instructions included in this Patient Guide will guide you on how to use the monitor. At the end of the study, take the device off and follow the instructions for promptly returning it.

**If you have questions after reviewing this guide,
please contact ReactDx at (877) 996-5553.**

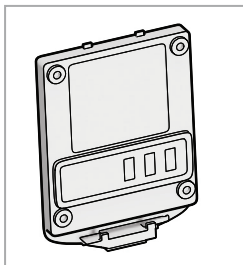
TelePatch Monitoring Kit Contents



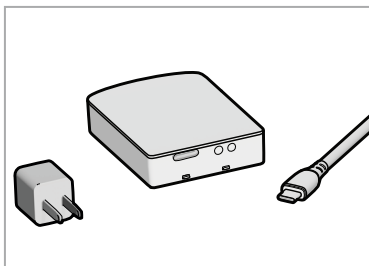
Handset



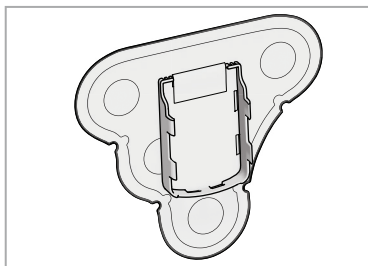
Universal Pendant



Battery(ies)

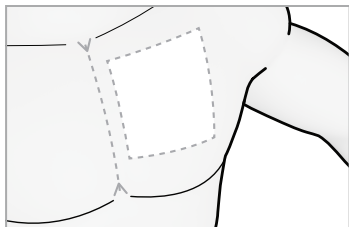


Battery Charger,
Charging Cable and Plug

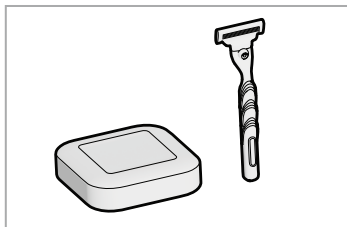


Electrode Patch(es)

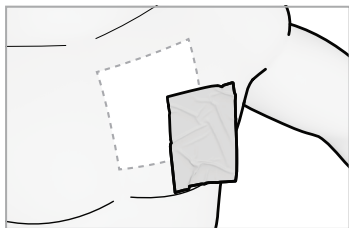
Preparing Your Skin



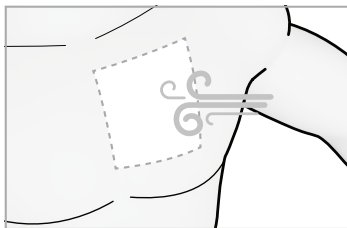
1 Find Location.



2 Wash with Plain Soap (No Lotion/Oil), Shave (if needed) and Dry.



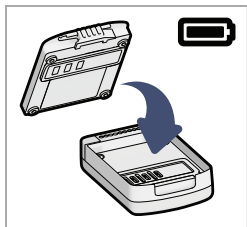
3 Wipe Location with Protective Skin Pad.



4 Dry 60 Seconds.

! The location for the Patch is just left of the center of the chest, as highlighted. All of the materials used are latex-free. The Protective Skin Pad is included in the Patch packaging. If you have known skin sensitivities, please contact your physician.

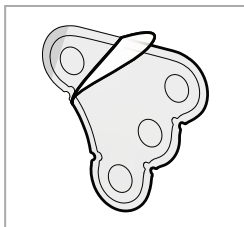
Putting the Device On



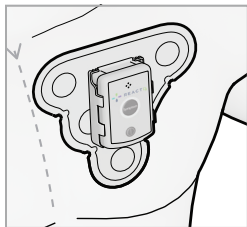
5 Insert Battery.



6 Insert Pendant.



7 Peel Backing.



8 Adhere to Chest.



9 Remove Tabs.



Do Not Move the Patch Over to Shoulder Area.

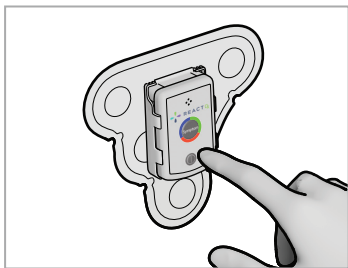
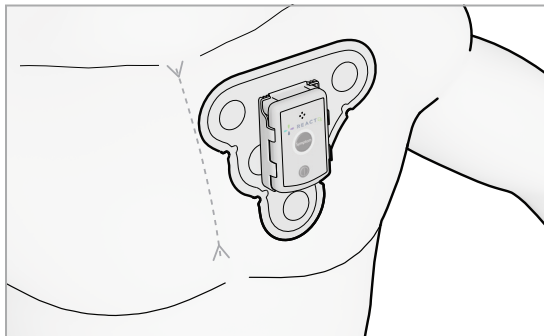
! Align the Patch just left of the center of your chest. Avoid your shoulder fold. Take care not to insert the Pendant upside down. Be sure the slightly curved end of the Pendant — the end at the bottom below the Power Button — is flush against the matching beveled part of the Cradle.

Starting Your Study

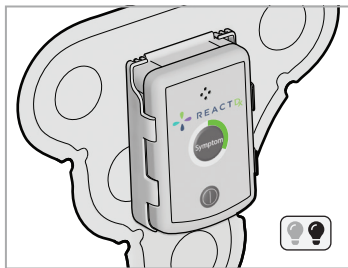


Flashing Light

Follow these Steps
After the Electrode
Patch is Attached in
the Proper Position
on the Chest.



1 Power **ON** the
Universal Pendant.

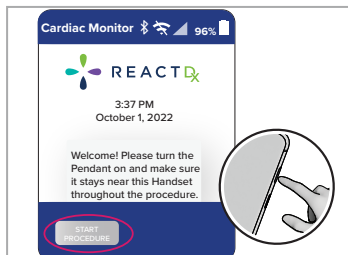


2 Green Light Flashes
Every 4 Seconds.

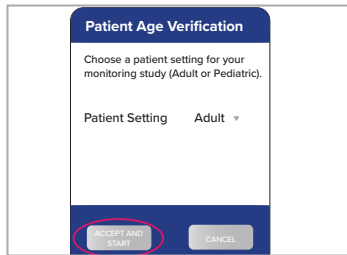


Confirm the **GREEN** light is flashing **SLOWLY**. The **GREEN** light indicates the Pendant is on and monitoring but is not communicating to the Handset. The Pendant communicates to the Handset when the Handset is powered on and in close proximity (6-10 feet) to the Pendant.

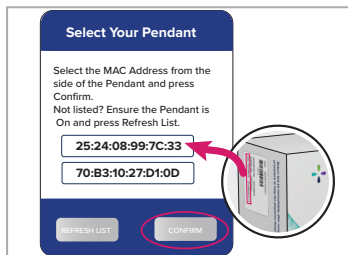
Starting the Handset



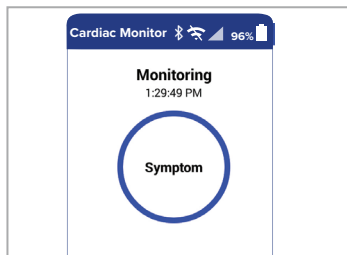
- 1 Turn On the Handset by Pressing the Power Key. Tap Start Procedure.



- 2 Select Adult or Pediatric for the Patient Setting. Tap Accept and Start.



- 3 Select your Pendant's MAC Address located on the sticker on the side of your box. Tap Confirm.



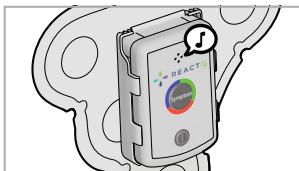
- 4 Your Procedure is Running when the Symptom Button Appears.

! Once the Handset is powered on and has connected to the Pendant the Pendant light will slowly flash BLUE indicating the Pendant is monitoring and communicating to the Handset properly.

Lighting and Sound Guide



Flashing Light



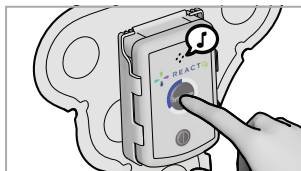
Power **ON**



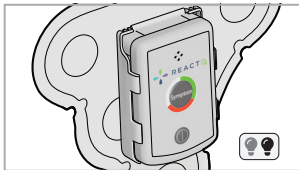
Power **OFF**



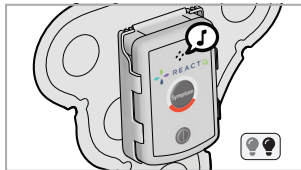
Monitoring - Good



Symptom Press



Check Pendant



Change Battery



BLUE

Flashing Light

Monitoring is Good,
and the Pendant is
communicating with
the Handset.

GREEN

Flashing Light

Monitoring is Good
but the Pendant is not
communicating with
the Handset.

ORANGE

Flashing Light

Change Battery.

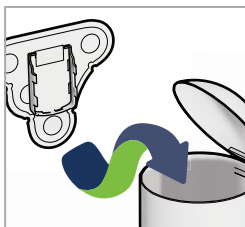
Replacing the Electrode Patch



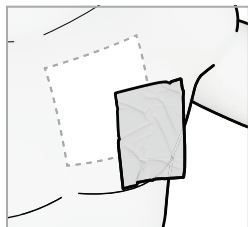
1 Remove Patch.



2 Remove Pendant.



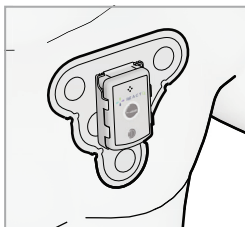
3 Discard Patch Only.



4 Wipe Location with Protective Skin Pad.



5 Insert Pendant.



6 Place on Chest and Ensure Pendant is **ON**.

! You should have enough supplies in your Kit to last through the end of your Study. If you need assistance or more supplies, **Contact Patient Support by phone (877) 996-5553 or chat with us online at www.ReactDx.com**

Battery Changing & Charging



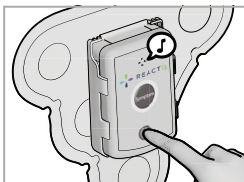
Flashing Light



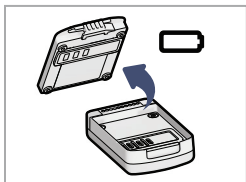
Charged Battery and Monitoring.



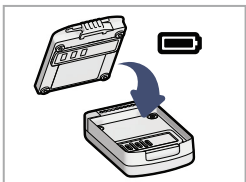
Low Battery.



1 Power Off.



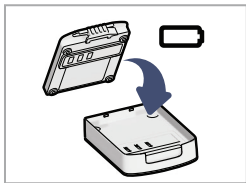
2 Remove Battery from Pendant.



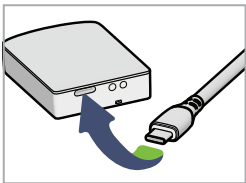
3 Add Charged Battery to Pendant.



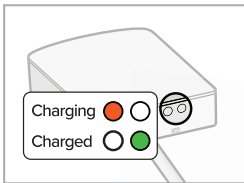
4 Insert and Ensure Pendant is **ON**.



5 Add Empty Battery to Charger.

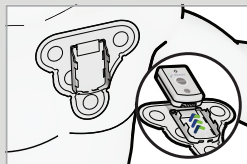


6 Connect Cord to Charger and Electrical Outlet.



7 Check Lights.

Showering and Drying



Remove Pendant

OR



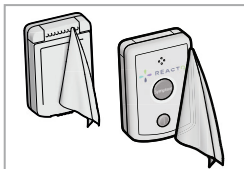
Wear in Shower



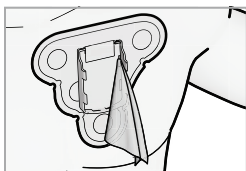
Do Not Submerge



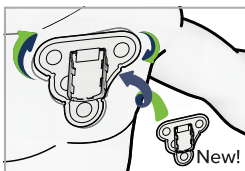
1 After Shower,
Remove Pendant.



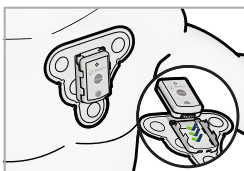
2 Dry the Pendant
Front and Back.



3 Dry Inside Cradle
Press on Patch &
Inside the Cradle.



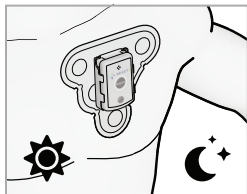
4 If Patch is Loose,
Replace It.



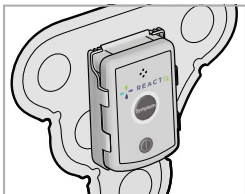
5 Insert Pendant
and Ensure
Pendant is **ON**.

! The Pendant is water-resistant, but the accessories are not. Please take precautions to prevent the charger and cord from getting wet.

Do's and Don'ts



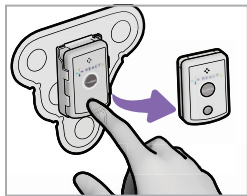
Wear Day and Night.



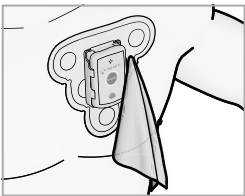
Fully Insert in Cradle.



Do Not Discard Pendant.



Turn Off Before
Changing Battery.



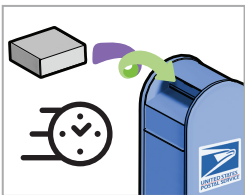
Dry Pendant and Patch.



Do Not Submerge.



Keep Near Handset.

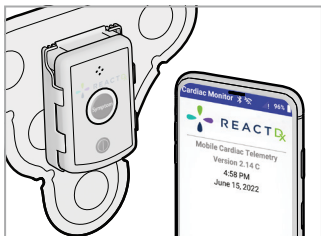


Return Promptly—
Leave Kit for Mail
Carrier to Pick Up in
any USPS Mailbox.

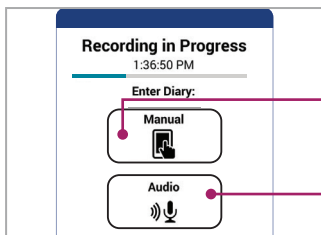


Do Not Move Patch
Over to Shoulder Area.

Making a Symptom Recording



- 1 When You Experience a Symptom, Press the Symptom Button on Pendant or Handset.



- 2 Press **Manual** or **Audio** to Record Symptom Details.

A screenshot of the REACTdx app's symptom recording form. It has three dropdown menus: 'Symptoms:' with 'Dizzy or lightheaded' selected, 'Location:' with 'Gym' selected, and 'Activity:' with 'Exercising' selected. Each menu has a downward arrow on the right.

Tap **Manual** and Select Your Symptoms, Location and Activity From the Three Drop-Down Menus. Tap **Save** When Finished.

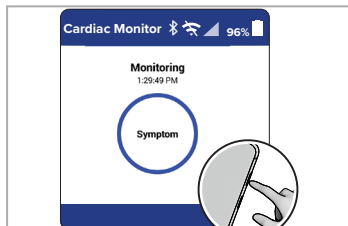
A screenshot of the REACTdx app's 'Speak Now' screen. It says 'Speak clearly into the smartphone handset and describe your symptoms, location, and activity.' Below this is a microphone icon and the text 'Speak Now'. Further down, it says 'Press 'Save' to save the information of 'Cancel to discard it.' At the bottom are two buttons: a blue 'SAVE' button with a checkmark and a red 'CANCEL' button with an 'X'.

Tap **Audio**. Speak Clearly Into the Handset Microphone, Describing Your Symptoms, Location, and Activity. Tap **Done** When Finished Recording.

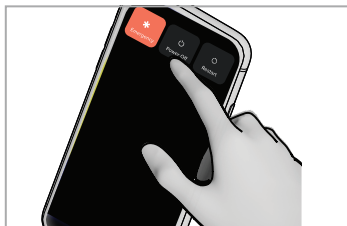
! *Remember:* When you experience a symptom, **press the Symptom button** on the **Pendant** or the **Handset** and record what you were feeling and doing.

Troubleshooting

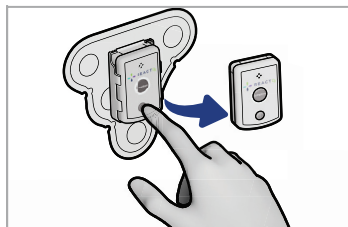
Text with a yellow caution icon on the Handset are Action Messages that require your attention. Follow these simple instructions to return to full monitoring.



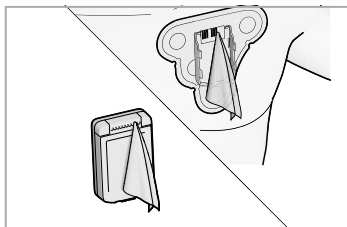
- 1 Press and Hold the Power Button on the side of the Handset.



- 2 Tap Power Off.

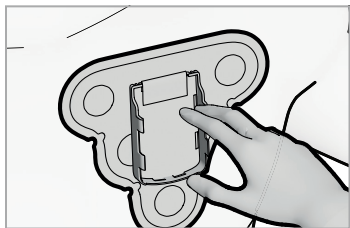


- 3 Turn Off and Remove Pendant.



- 4 Wipe Inside of Cradle Connections and Pendant Connection Pins.

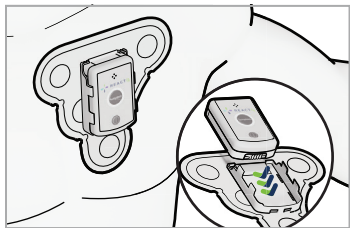
! This process solves the most common issues. If completing this troubleshooting process doesn't resolve the issue, please visit www.ReactDx.com/troubleshooting



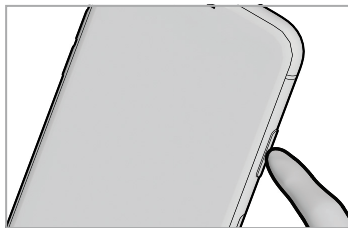
- 7** Ensure Patch is Secure to Chest by Using Finger to Press Inside of Cradle and Rest of Patch Against Chest.



- 8** Wait 3 Minutes.



- 9** Replace Pendant and Turn **ON**.



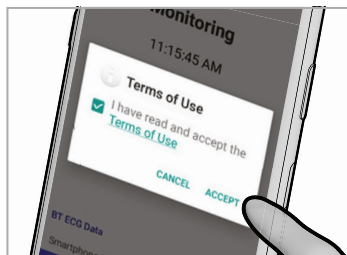
- 10** Turn **ON** Handset.

! If you are unable to resolve an issue or you need assistance with other error messages, call **ReactDx** at **(877) 996-5553** or chat with us online at **www.ReactDx.com**.

Connecting the Monitor to Wi-Fi



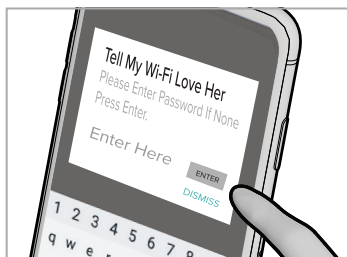
1 Tap the Wi-Fi Symbol at the Top of the Home Screen.



2 Read and Accept the Terms of Use.



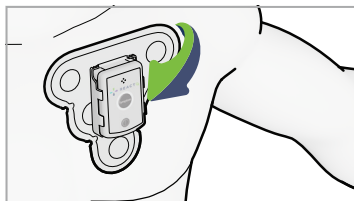
3 Select Your Network.



4 Enter Your Wi-Fi Password, Press Enter, and Verify Your Connection.

! Your Heart Monitor will automatically connect to a cellular network, however, if you choose to connect your monitor to a Wi-Fi network, it will help ensure the data collected is quickly transmitted to our cardiac monitoring centers.

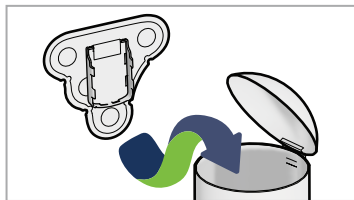
Procedure Ending Instructions



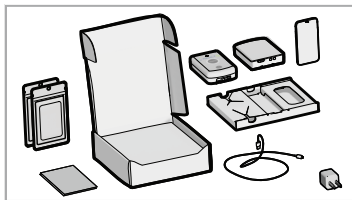
1 Remove Patch with Pendant from Chest.



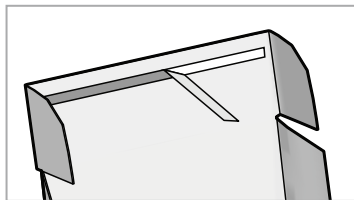
2 Remove Pendant.



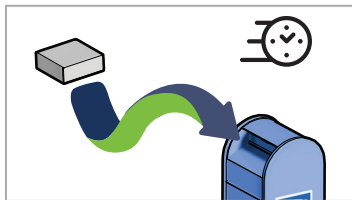
3 Discard Patch Only.



4 Insert All Contents / Unused Supplies Back into the Box.



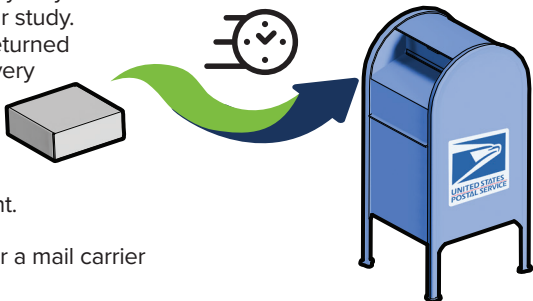
5 Close and Seal the Box.



6 Promptly Leave for Mail Carrier in Any USPS Mailbox.

Returning the Monitor Kit

Return your Kit promptly so your doctor can finalize your study. Devices that are not returned could slow report delivery to your doctor, result in a bill for the unreturned equipment, and delay helping the next patient.



Leave the sealed kit for a mail carrier in any USPS mailbox.

Please take a moment to fill out our patient survey at ReactDx.com/survey/.

Your input will help us provide patients, like yourself, the best possible experience.

Remember to return the Kit immediately after the procedure is complete to help your physician finish your test. Unreturned devices may result in a bill of up to \$2000 to replace the device.



(877) 996-5553 • www.ReactDx.com • Info@ReactDx.com

©2023 Medicomp, Inc. dba ReactDx



QSG0000725-01