

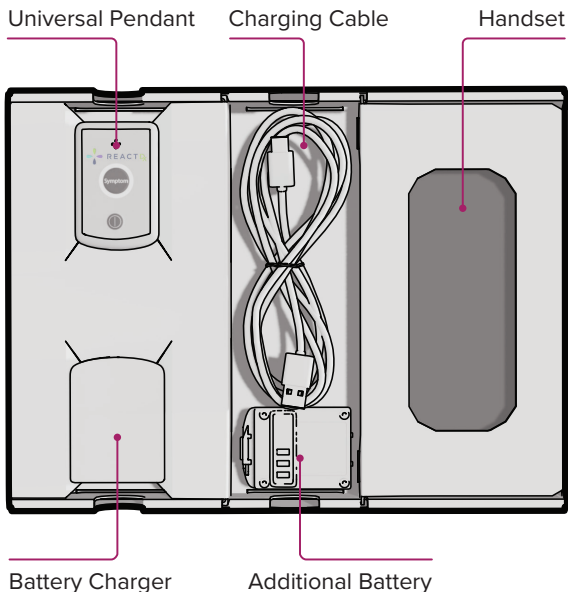


TelePatch™
Monitoring
System



The Most Advanced
& Convenient Ambulatory
Cardiac Monitoring System

Inside the Box



Find Electrode Patches Inside the Box.



ESPAÑOL

Encuentra Esta Guía en Español
ReactDx.com/es/GuiaTelePatch1-1

Table of Contents

Welcome To TelePatch	2
TelePatch Monitoring Kit Contents	3
Preparing Your Skin.....	4
Putting the Device On	5
Starting Your Study.....	6
Lighting and Sound Guide	8
Replacing Electrode Patch	9
Battery Changing & Charging	10
Making a Symptom Recording.....	11
Do's and Don'ts	12
Connecting the Monitor to Wi-Fi	13
Troubleshooting	14
Procedure Ending Instructions.....	16
Returning the Monitor Kit.....	Back Cover



To view ReactDx's Notice of Privacy Practices, Patient Rights and Responsibilities, and Assignment of Benefits/Patient Consent, please visit www.ReactDx.com/Notices. If you would like a written copy, please call (877) 996-5553.

Welcome To TelePatch

The most advanced heart monitoring system

Your doctor has prescribed an ambulatory cardiac monitoring study using the ReactDx TelePatch Monitor.

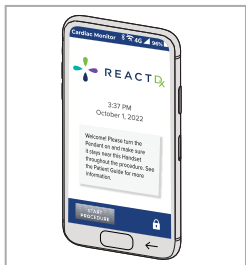
This guide will walk you through hooking up the monitor, using it during daily activities, recording symptoms when they occur, and returning the monitor at the end of the study. This study will monitor your heart's electrical activity and record any heart irregularities, called arrhythmias. Your doctor will review and interpret the results of this study.

ECG recordings are sent to ReactDx, where highly trained Certified Cardiac Technicians analyze your ECG data and create reports for your doctor. You should wear the monitor and go about your normal daily activities; you can even shower with the Patch. If at any point you feel a symptom or irregular heartbeat, just press the Symptom button either on the Pendant or the Handset. It is a simple process and should not interfere with your daily activities.

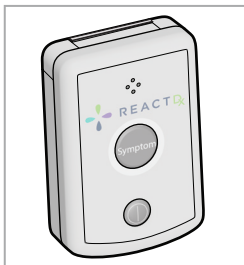
Begin wearing your monitor immediately, and you will wear the monitor 24-hours a day for the length of your prescribed test. The instructions included in this Patient Guide will guide you on how to use the monitor. At the end of the study, take the device off and follow the instructions for promptly returning it.

**If you have questions after reviewing this guide,
please contact ReactDx at (877) 996-5553.**

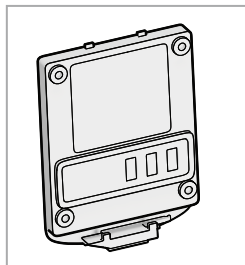
TelePatch Monitoring Kit Contents



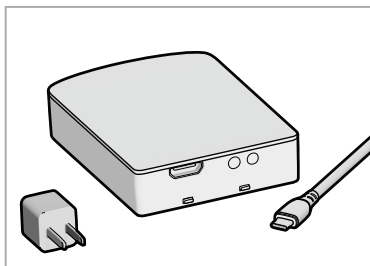
Handset



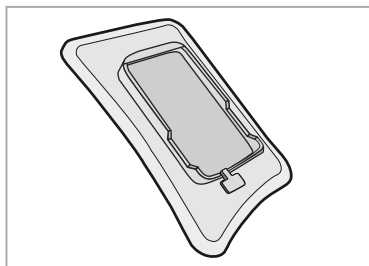
Universal Pendant



Battery(ies)

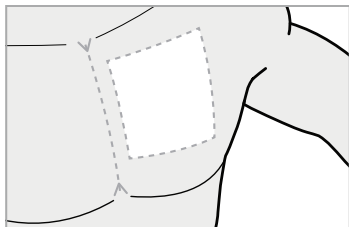


Battery Charger,
Charging Cable and Plug

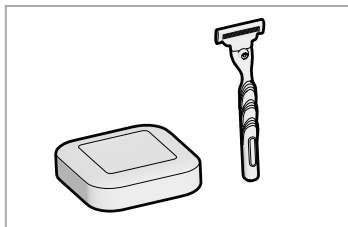


Electrode Patch(es)

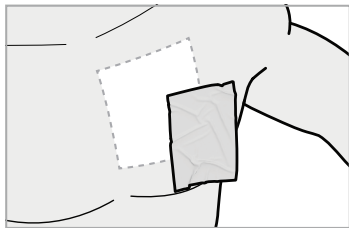
Preparing Your Skin



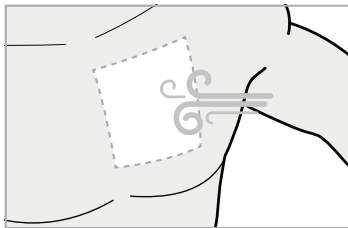
1 Find Location



2 Wash with Plain Soap (No Lotion/Oil), Shave (if needed) and Dry



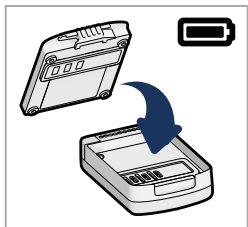
3 Wipe Location with Skin Prep Pad



4 Dry 60 Seconds

! The location for the Patch is just left of the center of the chest, as highlighted. All of the materials used are latex-free. If you have known skin sensitivities, please contact your physician.

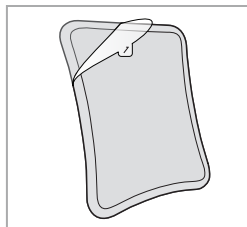
Putting the Device On



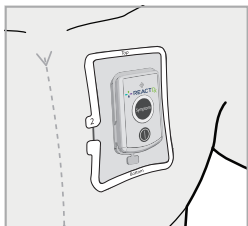
5 Insert Battery



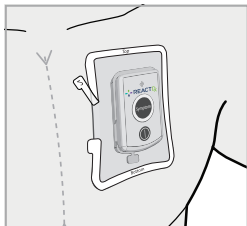
6 Insert Pendant
Insert Top of Pendant,
then Press Down on
the Bottom



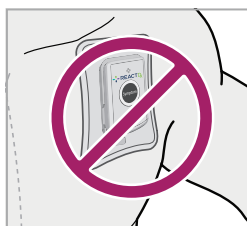
7 Peel Backing



8 Adhere to Chest



9 Remove white
outer ring.



Do Not Move Patch
Over to Shoulder Area

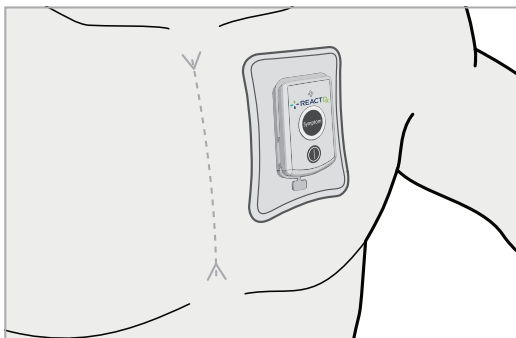
! Align the Patch in the center of your chest. Avoid your shoulder fold. Take care not to insert the Pendant upside down. Be sure the slightly curved end of the Pendant — the end at the bottom below the Power Button — is flush against the matching beveled part of the Cradle.

Starting Your Study

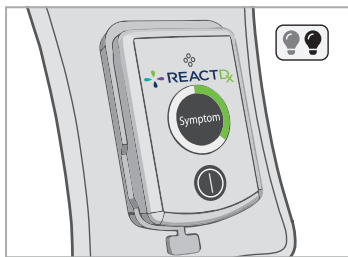


Flashing Light

When the Electrode Patch is Attached in the Proper Position on the Chest

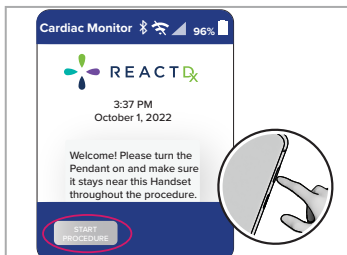


- 1 Confirm the Pendant is **ON**. If it is not, press the power button to turn it on.

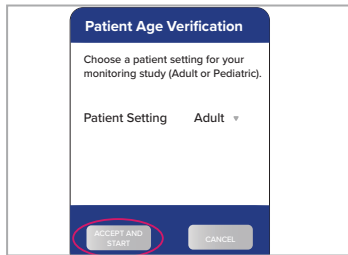


- 2 Green Light Flashes Every 4 Seconds

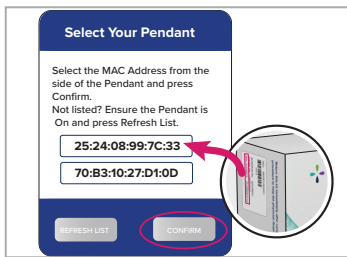
- ! Confirm the Green light is flashing **SLOWLY**. The **GREEN** light indicates the Pendant is on and monitoring but is not communicating to the Handset. The Pendant communicates to the Handset when the Handset is powered on and in close proximity (6-10 feet) to the Pendant.



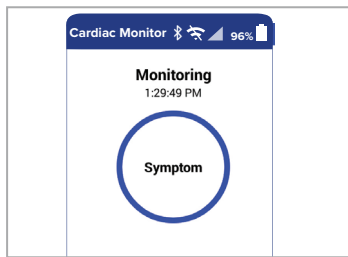
- 3** Turn On the Handset by Pressing the Power Key. Tap Start Procedure.



- 4** Select Adult or Pediatric for the Patient Setting. Tap Accept and Start.



- 5** Select your Pendant's MAC Address located on the sticker on the side of your box. Tap Confirm.



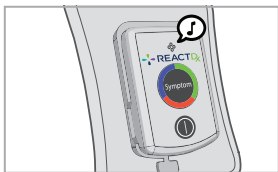
- 6** Your Procedure is Running when the Symptom Button Appears.

! Once the Handset is powered on and has connected to the Pendant the Pendant light will slowly flash BLUE indicating the Pendant is monitoring and communicating to the Handset properly.

Lighting and Sound Guide



Flashing Light



Power **ON**



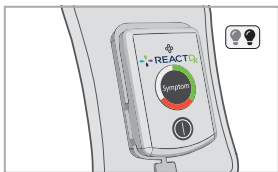
Power **OFF**



Monitoring - Good



Symptom Press



Check Pendant



Change Battery

BLUE

Flashing Light

Monitoring is Good, and communicating with the Handset.

GREEN

Flashing Light

Monitoring is Good but not communicating with the Handset.

ORANGE

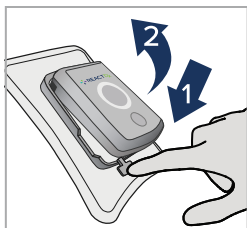
Flashing Light

Change battery

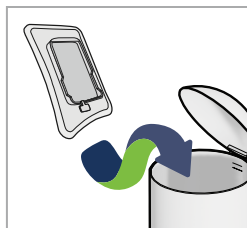
Replacing Electrode Patch



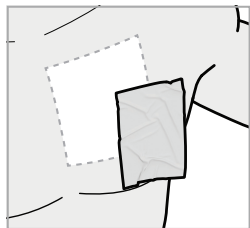
1 Remove Patch



2 Remove Pendant



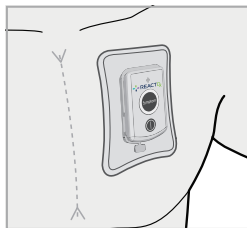
3 Discard Patch Only



4 Wipe Location with Skin Prep Pad



5 Insert Pendant



6 Place on Chest and Ensure Pendant is **ON**

- Once the Handset is powered on and has connected to the Pendant the Pendant light will flash BLUE slowly indicating the Pendant is monitoring and communicating to the Handset properly.

Battery Changing & Charging



Flashing Light



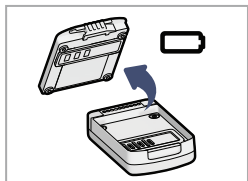
Charged Battery and Monitoring



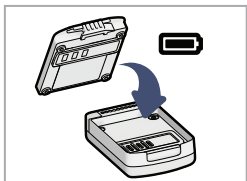
Low Battery



1 Power Off



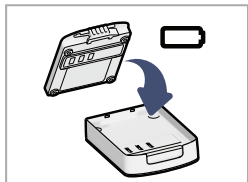
2 Remove Battery from Pendant



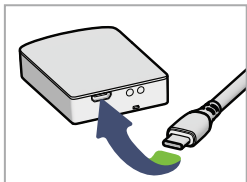
3 Add Battery to Pendant



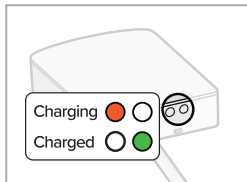
4 Insert and Ensure Pendant is **ON**



5 Add Battery to Charger

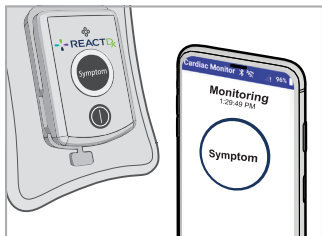


6 Connect Cord to Charger and Electrical Outlet

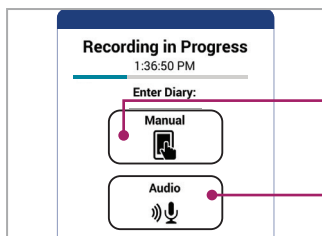


7 Check Lights

Making a Symptom Recording



- 1 When You Experience a Symptom, Press the Symptom Button on Pendant or Handset.



- 2 Press **Manual** or **Audio** to Record Symptom Details.

Symptoms:
Dizzy or lightheaded

Location:
Gym

Activity:
Exercising

Tap **Manual** and Select Your Symptoms, Location and Activity From the Three Drop-Down Menus. Tap **Save** When Finished.

Speak clearly into the smartphone handset and describe your symptoms, location, and activity.

Speak Now

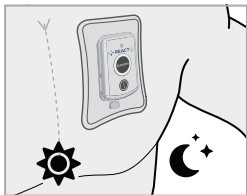
Press 'Save' to save the information of 'Cancel' to discard it.

SAVE **CANCEL**

Tap **Audio**. Speak Clearly Into the Handset Microphone, Describing Your Symptoms, Location, and Activity. Tap **Done** When Finished Recording.

- !** *Remember:* When you experience a symptom, **press the Symptom button** on the **Pendant** or the **Handset** and record what you were feeling and doing.

Do's and Don'ts



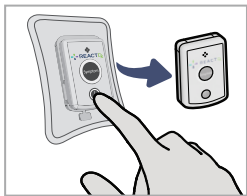
Wear Day and Night



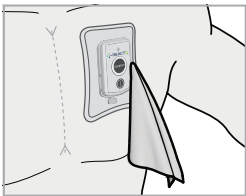
Fully Insert in Cradle



Do Not Discard Pendant



Turn Off Before
Changing Battery



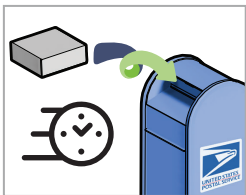
Dry Pendant and Patch



Do Not Submerge



Keep Near Handset

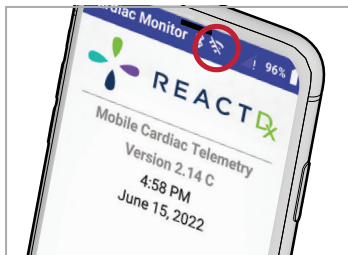


Return Promptly—
Leave Kit for Mail
Carrier to Pick Up in
any USPS Mailbox

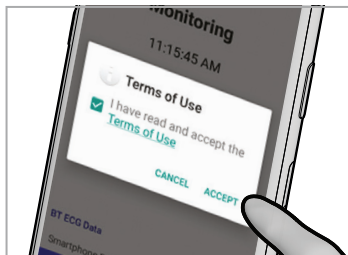


Do Not Move Patch
Over to Shoulder Area

Connecting the Monitor to Wi-Fi



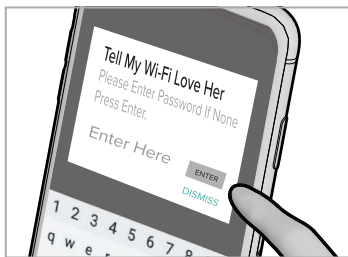
- 1** Tap the Wi-Fi Symbol at the Top of the Home Screen.



- 2** Read and Accept the Terms of Use.



- 3** Select Your Network.

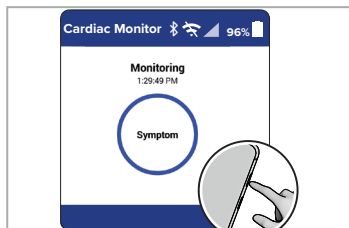


- 4** Enter Your Wi-Fi Password, Press Enter, and Verify Your Connection.

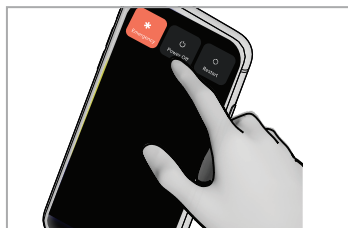
! Your Heart Monitor will automatically connect to a cellular network, however, if you choose to connect your monitor to a Wi-Fi network, it will help ensure the data collected is quickly transmitted to our cardiac monitoring centers.

Troubleshooting

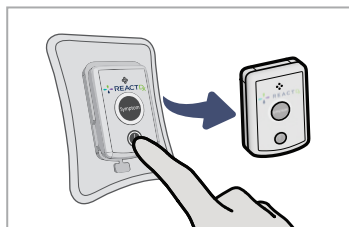
Text with a yellow caution icon on the Handset is an Action Message that requires your attention. Follow these simple instructions to return to full monitoring.



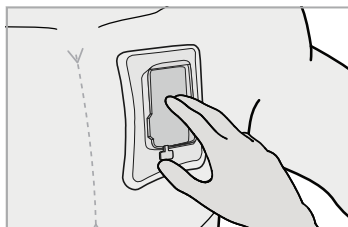
- 1** Press and Hold the Power Button on the side of the Handset.



- 2** Tap Power Off.

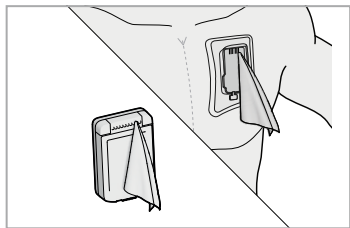


- 3** Turn Off and Remove Pendant.

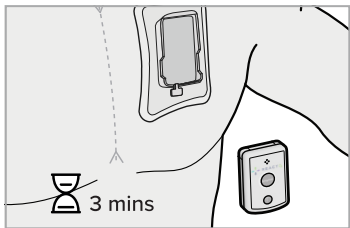


- 4** Ensure Patch is Secure to Chest by Using Finger to Press Inside of Cradle and Rest of Patch Against Chest

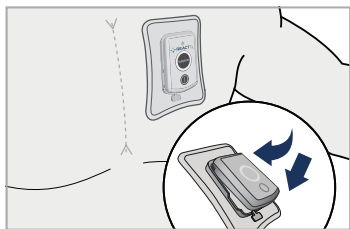
! This process solves the most common issues. If completing this troubleshooting process doesn't resolve the issue, please visit www.ReactDx.com/troubleshooting



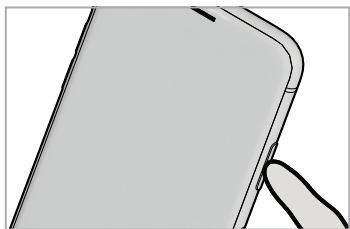
- 5** Wipe Inside of Cradle Connections and Pendant Connection Pins with an alcohol wipe.



- 6** Wait 3 Minutes



- 7** Replace Pendant and Turn **ON**



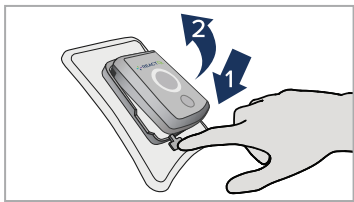
- 8** Turn **ON** Handset

! If you are unable to resolve an issue or if you need assistance with other error messages, **call ReactDx at (877) 996-5553 or chat with us online at www.ReactDx.com.**

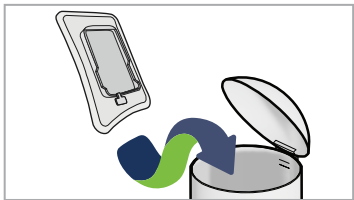
Procedure Ending Instructions



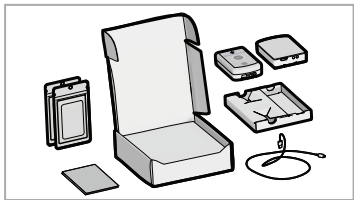
1 Remove Patch with Pendant from Chest



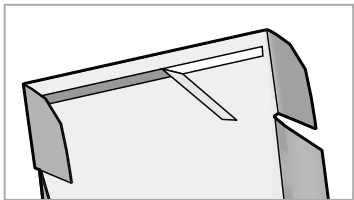
2 Remove Pendant



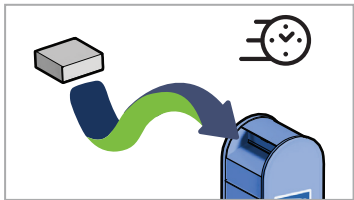
3 Discard Patch Only



4 Insert All Contents / Unused Supplies Back into the Box



5 Close and Seal the Box

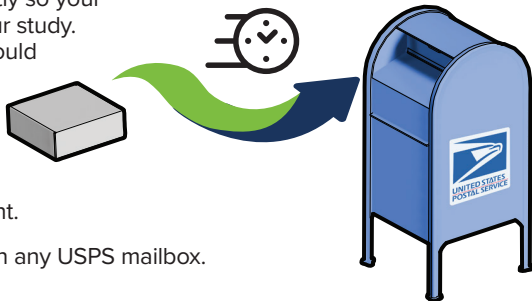


6 Promptly Leave for Mail Carrier in Any USPS Mailbox

This page left blank intentionally.

Returning the Monitor Kit

Return your Kit promptly so your doctor can finalize your study. Unreturned devices could slow delivery to your doctor, result in a bill for the unreturned equipment, and delay helping the next patient.



Leave for mail carrier in any USPS mailbox.



Please take a moment to fill out our patient survey at www.ReactDx.com/survey. Your input will help us provide patients, like yourself, the best possible experience.

Remember to return the Kit immediately after the procedure is complete to help your physician finish your test. Unreturned devices may result in a bill of up to \$2000 to replace the device.



Medicomp, Inc.
dba ReactDx has earned
the Joint Commission's
Gold Seal of Approval.



(877) 996-5553 • www.ReactDx.com • Info@ReactDx.com

©2023 Medicomp, Inc. dba ReactDx

QSG0000726-01