

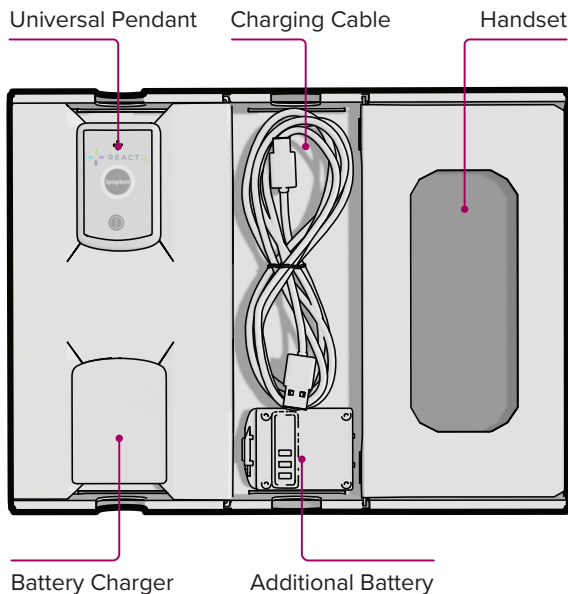


**TelePatch™**  
Monitoring System

The Most Advanced  
& Convenient Ambulatory  
Cardiac Monitoring System

## Inside the Box

---



**Find Electrode Patches Inside the Box.**

---



ESPAÑOL

Encuentra Esta Guía en Español

[ReactDx.com/es/GuiaTelePatch](https://ReactDx.com/es/GuiaTelePatch)

# Table of Contents

---

Welcome To TelePatch .....	2
TelePatch Monitoring Kit Contents .....	3
Preparing Your Skin.....	4
Putting the Device On .....	5
Starting Your Study .....	6
Starting the Handset.....	7
Lighting and Sound Guide .....	8
Replacing Electrode Patch .....	9
Battery Changing & Charging .....	10
Showering and Drying.....	11
Do's and Don'ts .....	12
Making a Symptom Recording .....	13
Troubleshooting .....	14
Connecting the Monitor to Wi-Fi .....	16
Procedure Ending Instructions.....	17
Returning the Monitor Kit.....	Back Cover



# Welcome To TelePatch

---

## The most advanced heart monitoring system

Your doctor has prescribed an ambulatory cardiac monitoring study using the ReactDx TelePatch Monitor.

This guide will walk you through hooking up the monitor, using it during daily activities, recording symptoms when they occur, and returning the monitor at the end of the study. This study will monitor your heart's electrical activity and record any heart irregularities, called arrhythmias. Your doctor will review and interpret the results of this study.

ECG recordings are sent to ReactDx, where highly trained Certified Cardiac Technicians analyze your ECG data and create reports for your doctor. You should wear the monitor and go about your normal daily activities; you can even shower with the patch. If at any point you feel a symptom or irregular heartbeat, just press the Symptom button either on the Pendant or the Handset. It is a simple process and should not interfere with your daily activities.

Begin wearing your monitor immediately, and you will wear the monitor 24-hours a day for the length of your prescribed test. The instructions included in this Patient Guide will guide you on how to use the monitor. At the end of the study, take the device off and follow the instructions for promptly returning it.

**If you have questions after reviewing this guide,  
please contact ReactDx at (877) 996-5553.**

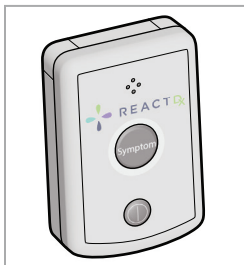


# TelePatch Monitoring Kit Contents

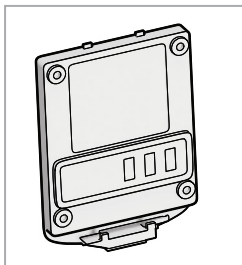
---



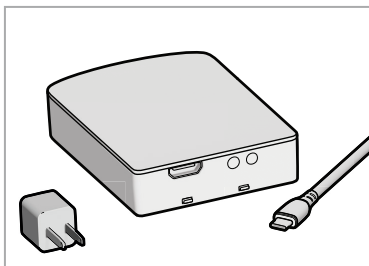
Handset



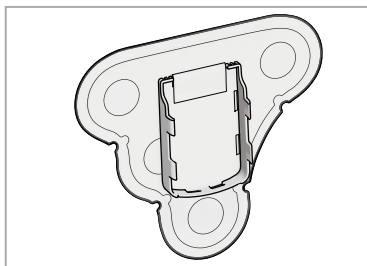
Universal Pendant



Battery(ies)



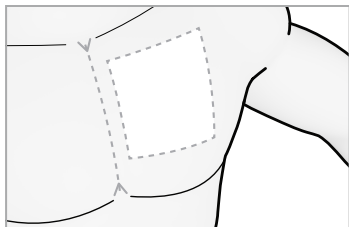
Battery Charger,  
Charging Cable and Plug



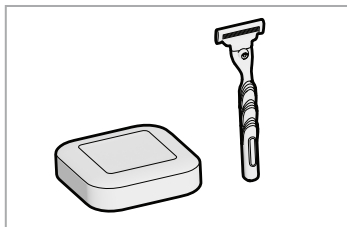
Electrode Patch(es)

# Preparing Your Skin

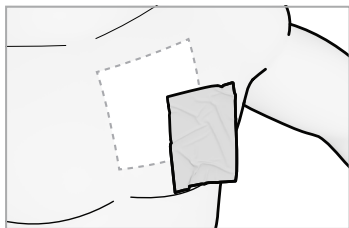
---



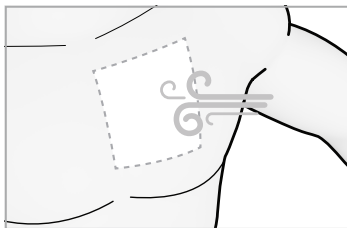
**1** Find Location.



**2** Wash with Plain Soap (No Lotion/Oil), Shave (if needed) and Dry.



**3** Wipe Location with Protective Skin Pad.

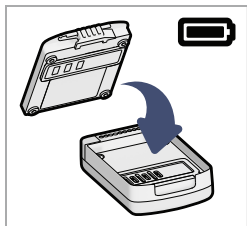


**4** Dry 60 Seconds.

**!** The location for the Patch is just left of the center of the chest, as highlighted. All of the materials used are latex-free and hypoallergenic. The Protective Skin Pad is included in the Patch packaging. If you have known skin sensitivities, please contact your physician.

## Putting the Device On

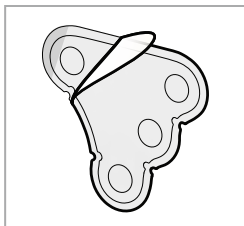
---



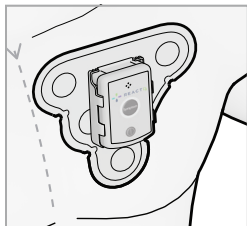
**5** Insert Battery.



**6** Insert Pendant.



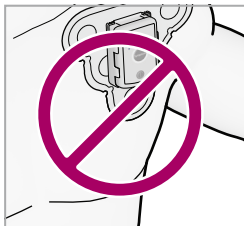
**7** Peel Backing.



**8** Adhere to Chest.



**9** Remove Tabs.



Do Not Move the Patch Over to Shoulder Area.

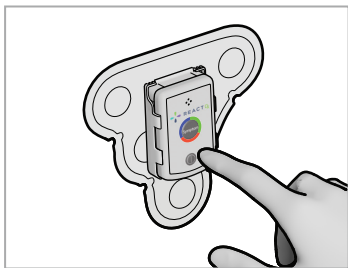
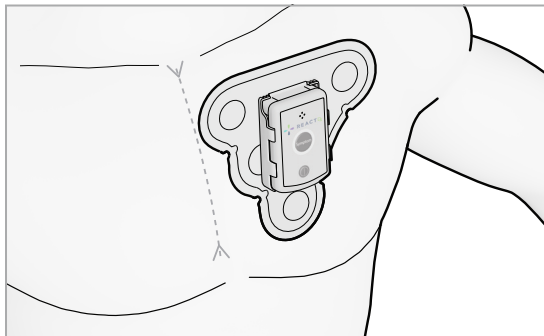
**!** Align the Patch just left of the center of your chest. Avoid your shoulder fold. Take care not to insert the Pendant upside down. Be sure the slightly curved end of the Pendant — the end at the bottom below the Power Button — is flush against the matching beveled part of the Cradle.

# Starting Your Study

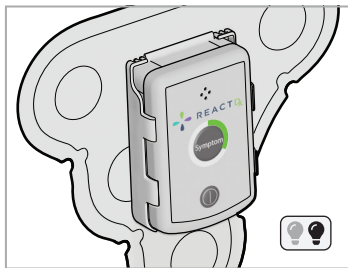


## Flashing Light

Follow these Steps  
After the Electrode  
Patch is Attached in  
the Proper Position  
on the Chest.



**1** Power **ON** the  
Universal Pendant.

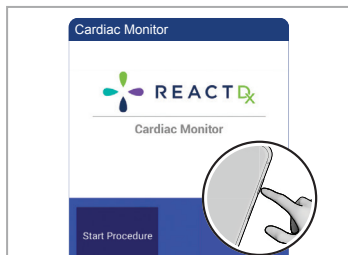


**2** Green Light Flashes  
Every 4 Seconds.

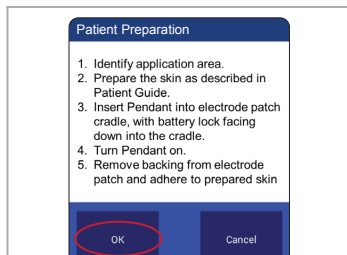


Confirm the **GREEN** light is flashing **SLOWLY**. The **GREEN** light indicates the Pendant is on and monitoring but is not communicating to the Handset. The Pendant communicates to the Handset when the Handset is powered on and in close proximity (6-10 feet) to the Pendant.

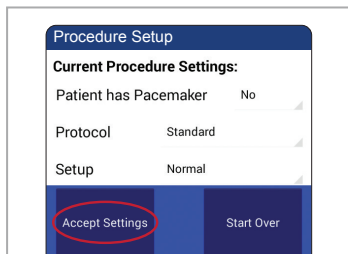
# Starting the Handset



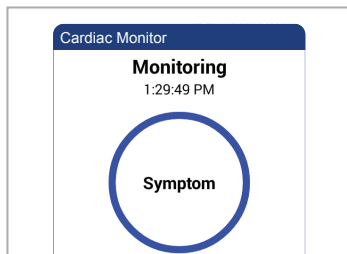
- 1** Turn On the Handset by Pressing the Power Key. Tap Start Procedure.



- 2** Follow All Patient Preparation Steps Detailed on Pages 4, 5, and 6, and Tap Ok.



- 3** Tap Accept Settings on the Procedure Setup Screen.



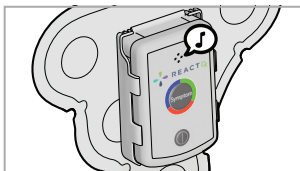
- 4** Your Procedure is Running when the Symptom Button Appears.

**!** Once the Handset is powered on and has connected to the Pendant the Pendant light will slowly flash BLUE indicating the Pendant is monitoring and communicating to the Handset properly.

# Lighting and Sound Guide



Flashing Light



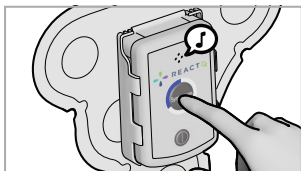
Power **ON**



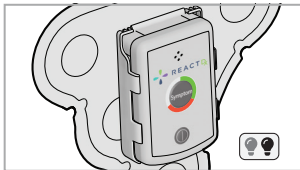
Power **OFF**



Monitoring - Good



Symptom Press



Check Pendant



Change Battery



**BLUE**

**Flashing Light**

Monitoring is Good,  
and the Pendant is  
communicating with  
the Handset.

**GREEN**

**Flashing Light**

Monitoring is Good  
but the Pendant is not  
communicating with  
the Handset.

**ORANGE**

**Flashing Light**

Change Battery.

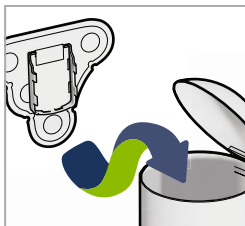
# Replacing the Electrode Patch



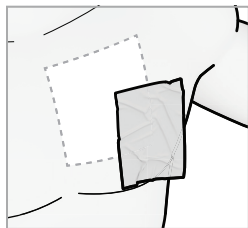
**1** Remove Patch.



**2** Remove Pendant.



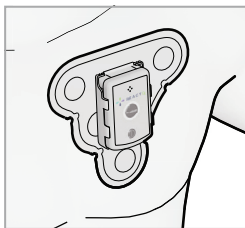
**3** Discard Patch Only.



**4** Wipe Location with Protective Skin Pad.



**5** Insert Pendant.



**6** Place on Chest and Ensure Pendant is **ON**.

**!** You should have enough supplies in your Kit to last through the end of your Study. If you need assistance or more supplies, **Contact Patient Support by phone (877) 996-5553 or chat with us online at [www.ReactDx.com](http://www.ReactDx.com)**

# Battery Changing & Charging



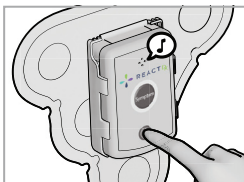
Flashing Light



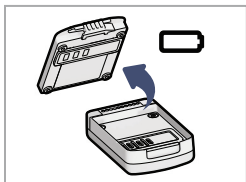
Charged Battery and Monitoring.



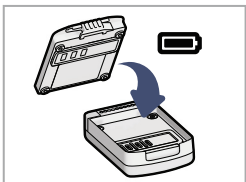
Low Battery.



**1** Power Off.



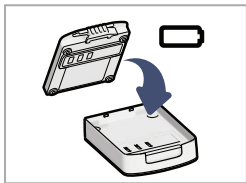
**2** Remove Battery from Pendant.



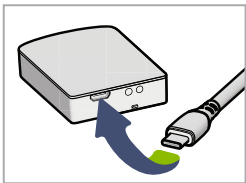
**3** Add Charged Battery to Pendant.



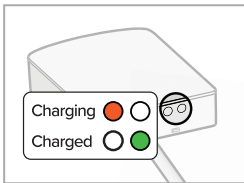
**4** Insert and Ensure Pendant is **ON**.



**5** Add Empty Battery to Charger.



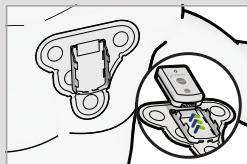
**6** Connect Cord to Charger and Electrical Outlet.



**7** Check Lights.



# Showering and Drying

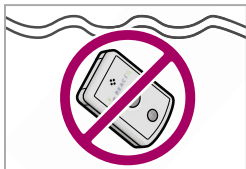


Remove Pendant

OR



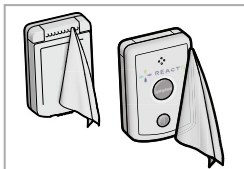
Wear in Shower



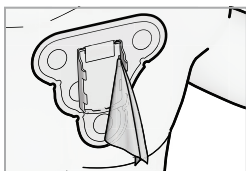
**Do Not Submerge**



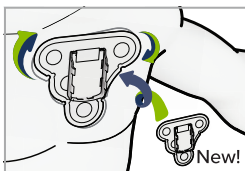
**1** After Shower,  
Remove Pendant.



**2** Dry the Pendant  
Front and Back.



**3** Dry Inside Cradle  
Press on Patch &  
Inside the Cradle.



**4** If Patch is Loose,  
Replace It.

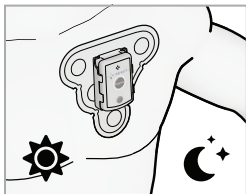


**5** Insert Pendant  
and Ensure  
Pendant is **ON**.

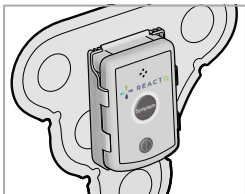


The Pendant is water-resistant, but the accessories are not. Please take precautions to prevent the charger and cord from getting wet.

## Do's and Don'ts



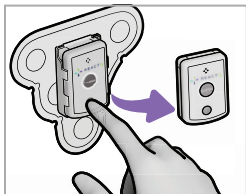
Wear Day and Night.



Fully Insert in Cradle.



Do Not Discard Pendant.



Turn Off Before  
Changing Battery.



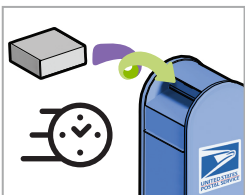
Dry Pendant and Patch.



Do Not Submerge.



Keep Near Handset.

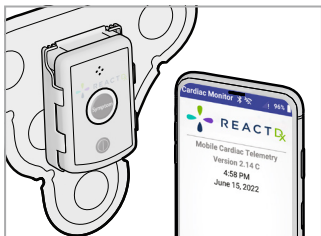


*Return Promptly—*  
Leave Kit for Mail  
Carrier to Pick Up in  
any USPS Mailbox.

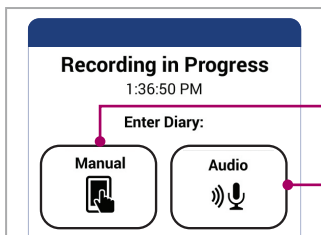


Do Not Move Patch  
Over to Shoulder Area.

# Making a Symptom Recording



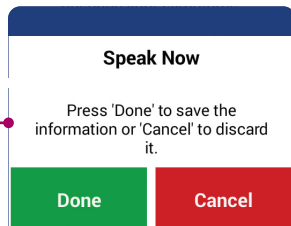
- 1 When You Experience a Symptom, Press the Symptom Button on Pendant or Handset.



- 2 Press **Manual** or **Audio** to Record Symptom Details.

A screenshot of the symptom recording form. It has three dropdown menus: 'Symptoms:' with 'Dizzy or lightheaded' selected, 'Location:' with 'Gym' selected, and 'Activity:' with 'Exercising' selected. A red line connects the 'Symptoms' dropdown to the 'Manual' button in the previous screenshot.

Tap **Manual** and Select Your Symptoms, Location and Activity From the Three Drop-Down Menus. Tap **Save** When Finished.



Tap **Audio**. Speak Clearly Into the Handset Microphone, Describing Your Symptoms, Location, and Activity. Tap **Done** When Finished Recording.

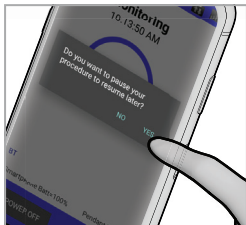
- !** *Remember:* When you experience a symptom, **press the Symptom button** on the **Pendant** or the **Handset** and record what you were feeling and doing.

# Troubleshooting

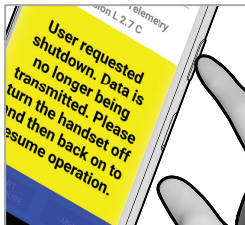
Text highlighted in YELLOW on the Handset are Action Messages and require your attention. Follow these simple instructions to return to full monitoring.



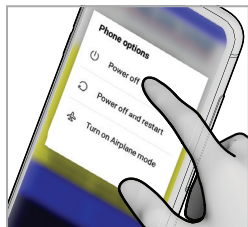
- 1** Press and Hold POWER OFF on the Handset Display.



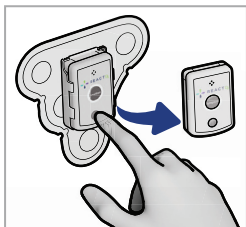
- 2** Tap Yes and Wait Until the User Requested Shutdown Appears.



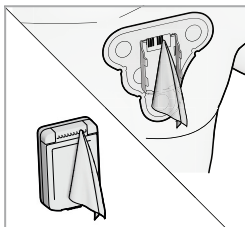
- 3** Press and Hold the Power Button on the Side of the Handset.



- 4** Tap Power Off.

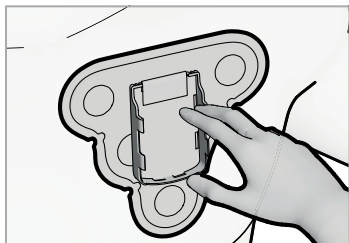


- 5** Turn Off and Remove Pendant.

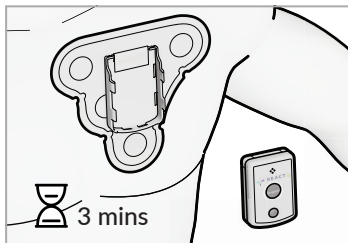


- 6** Wipe Inside of Cradle Connections and Pendant Connection Pins.

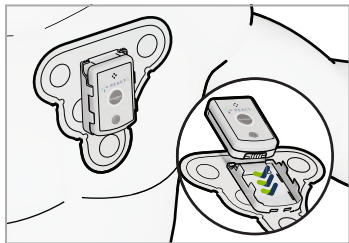
**!** This process solves the most common issues. If completing this troubleshooting process doesn't resolve the issue, please visit [www.ReactDx.com/troubleshooting](http://www.ReactDx.com/troubleshooting)



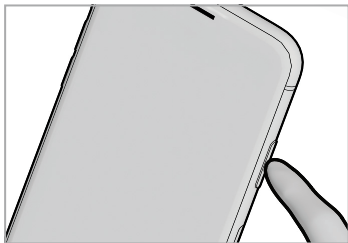
- 7** Ensure Patch is Secure to Chest by Using Finger to Press Inside of Cradle and Rest of Patch Against Chest.



- 8** Wait 3 Minutes.



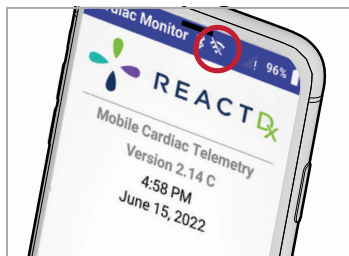
- 9** Replace Pendant and Turn **ON**.



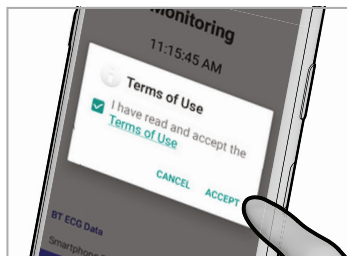
- 10** Turn **ON** Handset.

**!** If you are unable to resolve an issue or you need assistance with other yellow banner messages, call **ReactDx at (877) 996-5553** or chat with us online at **[www.ReactDx.com](http://www.ReactDx.com)**.

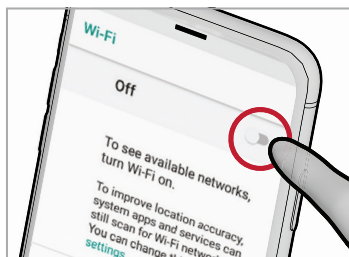
# Connecting the Monitor to Wi-Fi



**1** Tap the Wi-Fi Symbol at the Top of the Home Screen.



**2** Read and Accept the Terms of Use.



**3** Toggle the Wi-Fi Switch to the "On" Position. Select Your Network.

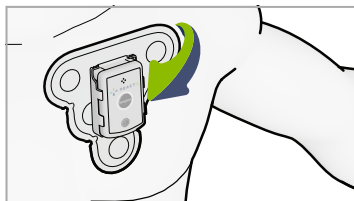


**4** Enter Your Wi-Fi Password, Press Connect, and Verify Your Connection.

**!** Your Heart Monitor will automatically connect to a cellular network, however, if you choose to connect your monitor to a Wi-Fi network, it will help ensure the data collected is quickly transmitted to our cardiac monitoring centers.

# Procedure Ending Instructions

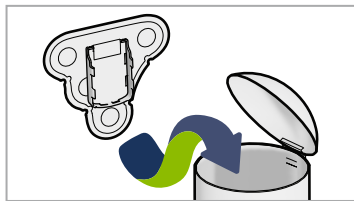
---



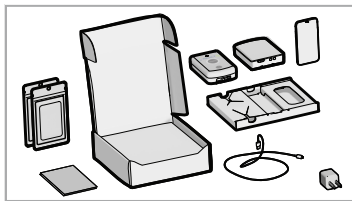
**1** Remove Patch with Pendant from Chest.



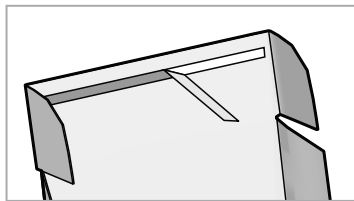
**2** Remove Pendant.



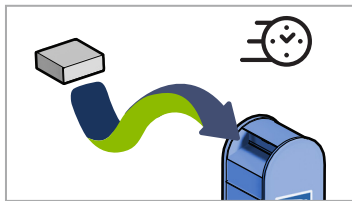
**3** Discard Patch Only.



**4** Insert All Contents / Unused Supplies Back into the Box.



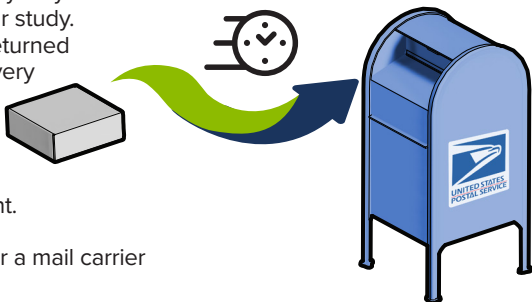
**5** Close and Seal the Box.



**6** Promptly Leave for Mail Carrier in Any USPS Mailbox.

# Returning the Monitor Kit

Return your Kit promptly so your doctor can finalize your study. Devices that are not returned could slow report delivery to your doctor, result in a bill for the unreturned equipment, and delay helping the next patient.



Leave the sealed kit for a mail carrier in any USPS mailbox.

Please take a moment to fill out our patient survey at **[ReactDx.com/survey/](https://ReactDx.com/survey/)**.

Your input will help us provide patients, like yourself, the best possible experience.



(877) 996-5553 • [www.ReactDx.com](https://www.ReactDx.com) • [Info@ReactDx.com](mailto:Info@ReactDx.com)

©2023 Medicomp, Inc. dba ReactDx



QSGR000724-01