



Holter Patient Guide

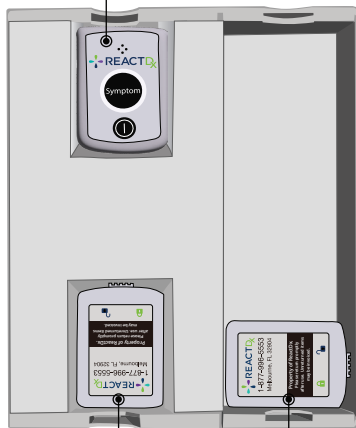


TelePatch™ Monitoring System Holter Patient Guide

The Most Advanced
& Convenient Ambulatory
Cardiac Monitoring System

Inside the Box

Universal Pendant



Battery(ies)

Additional Battery

Find Electrode Patches Inside the Box.



ESPAÑOL

Encuentra Esta Guía en Español

ReactDx.com/es/GuiaHolter

Table of Contents

Welcome To TelePatch	2
TelePatch Holter Monitoring Kit Contents..	3
Preparing Your Skin.....	4
Putting the Device On	5
Starting Your Holter Study	6
Lighting and Sound Guide	7
Replacing the Electrode Patch	8
Changing the Battery.....	9
Showering and Drying.....	10
Do's and Don'ts	11
Making a Symptom Recording	12
Procedure Ending Instructions.....	13
Returning the Monitor Kit.....	Back Cover



Welcome To TelePatch

The most advanced heart monitoring system

Your doctor has prescribed a Holter study using the ReactDx TelePatch Monitor.

This guide will walk you through hooking up the monitor, using it during daily activities, recording symptoms when they occur, and returning the monitor at the end of the study. This study will monitor your heart's electrical activity and record any heart irregularities, called arrhythmias. Your doctor will review and interpret the results of this study.

ECG recordings are sent to ReactDx, where highly trained Certified Cardiac Technicians analyze your ECG data and create reports for your doctor. You should wear the monitor and go about your normal daily activities; you can even shower with the patch. If at any point you feel a symptom or irregular heartbeat, just press the Symptom button. It is a simple process and should not interfere with your daily activities.

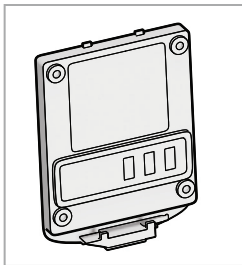
Begin wearing your monitor immediately, and you will wear the monitor 24-hours a day for the length of your prescribed test. The instructions included in this Patient Guide will guide you on how to use the monitor. At the end of the study, take the device off and follow the instructions for promptly returning it.

**If you have questions after reviewing this guide,
please contact ReactDx at (877) 996-5553.**

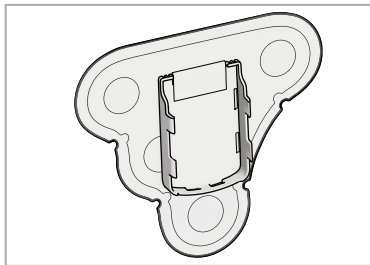
TelePatch Holter Monitoring Kit Contents



Universal Pendant



Battery(ies)



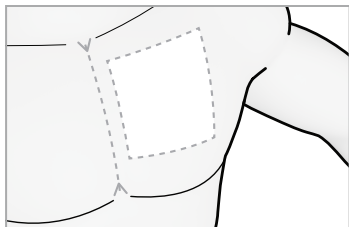
Electrode Patch(es)



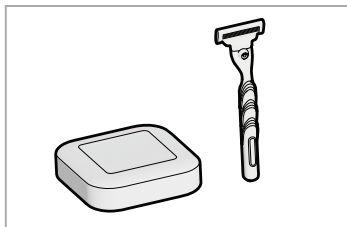
Note: The number of Patches and Batteries included in your kit is dependent upon the prescribed duration of your Holter study.

A Patient Diary may also be included in your Kit.

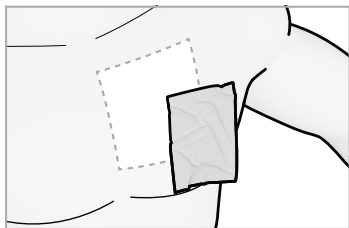
Preparing Your Skin



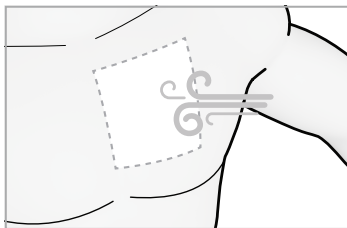
1 Find Location.



2 Wash with Plain Soap (No Lotion/Oil), Shave (if needed) and Dry.



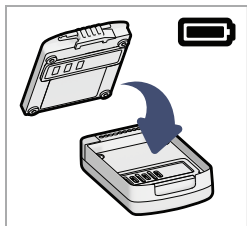
3 Wipe Location with Protective Skin Pad.



4 Dry 60 Seconds.

! The location for the Patch is just left of the center of the chest, as highlighted. All of the materials used are latex-free and hypoallergenic. The Protective Skin Pad is included in the Patch packaging. If you have known skin sensitivities, please contact your physician.

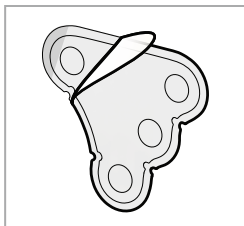
Putting the Device On



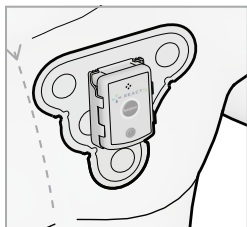
5 Insert Battery.



6 Insert Pendant.



7 Peel Backing.



8 Adhere to Chest.



9 Remove Tabs.



Do Not Move the Patch Over to Shoulder Area.

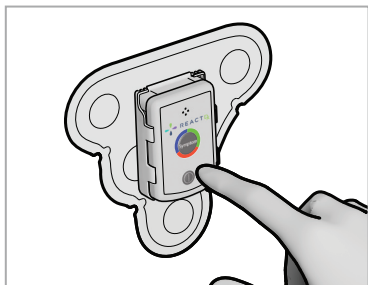
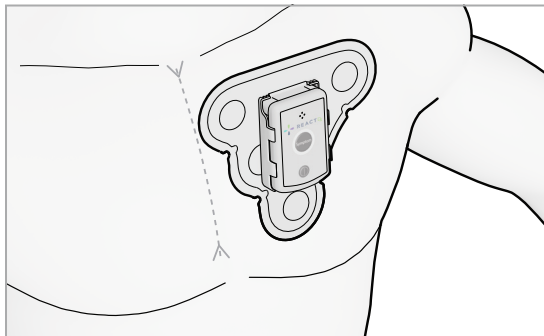
- ! Align the Patch just left of the center of your chest. Avoid your shoulder fold. Take care not to insert the Pendant upside down. Be sure the slightly curved end of the Pendant — the end at the bottom below the Power Button — is flush against the matching beveled part of the Cradle.

Starting Your Holter Study

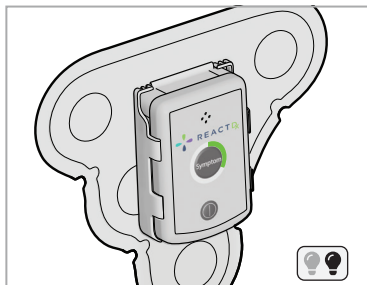


Flashing Light

Follow these Steps after the Electrode Patch is Attached in the Proper Position on the Chest.



1 Power **ON** the Universal Pendant.



2 Green Light Flashes Every 2 Seconds.



The Holter study will begin when the Pendant is powered on and inserted into the Patch. Confirm the GREEN light is flashing SLOWLY. If the monitor displays any other flashing lights or audible sounds, please call **ReactDx's Patient Support at (877) 996-5553** or chat with us online at **www.ReactDx.com**.

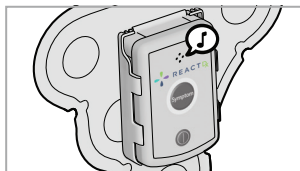
Lighting and Sound Guide



Flashing Light



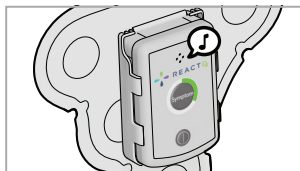
Power **ON**



Power **OFF**



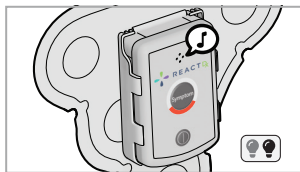
Monitoring - Good



Symptom Press



Check Pendant



Change Battery



If the Check Pendant **BLUE** light starts flashing, remove the Pendant, wipe front and back of the Pendant and inside of the Patch Cradle with a clean dry cloth, and insert the Pendant back in securely.

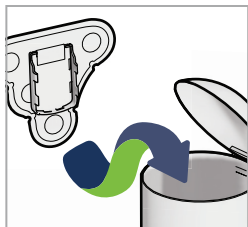
Replacing the Electrode Patch



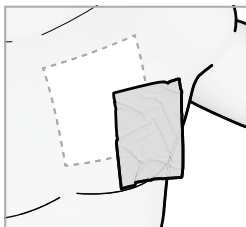
1 Remove Patch.



2 Remove Pendant.



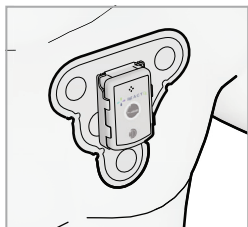
3 Discard Patch Only.



4 Wipe Location with Protective Skin Pad.



5 Insert Pendant.



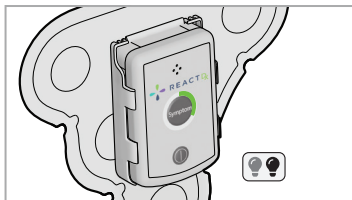
6 Place on Chest and Ensure Pendant is **ON**.

! You should have enough supplies in your Kit to last through the end of your Study. Please follow these instructions carefully for proper application. If you have questions, please contact **Patient Support at (877) 996-5553 or chat with us online at www.ReactDx.com.**

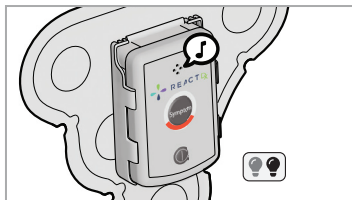
Changing the Battery



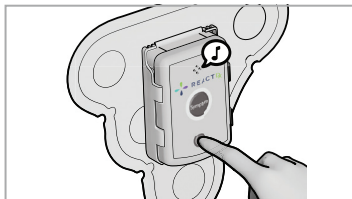
Flashing Light



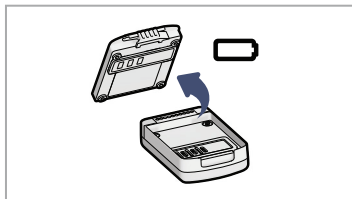
Charged Battery and Monitoring.



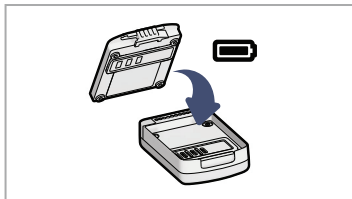
Low Battery.



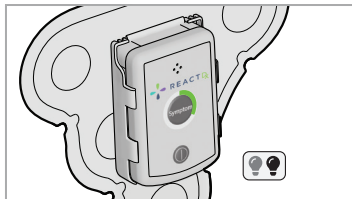
1 Power Off.



2 Remove Battery from Pendant.

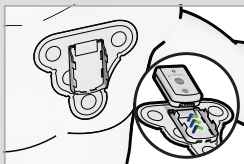


3 Add Charged Battery to the Pendant.



4 Insert Pendant into the Patch. Ensure the Pendant is **ON**.

Showering and Drying



Remove Pendant

OR



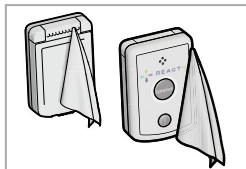
Wear in Shower



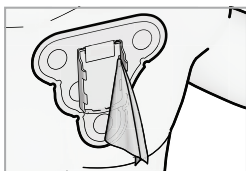
Do Not Submerge



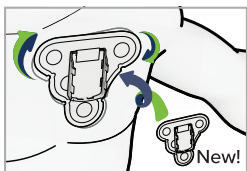
1 After Shower,
Remove Pendant.



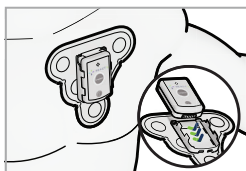
2 Dry the Pendant
Front and Back.



3 Dry Inside Cradle
Press on Patch &
Inside the Cradle.



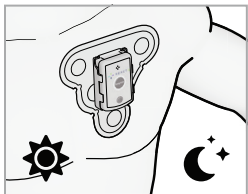
4 If the Patch is
Loose, Replace It.



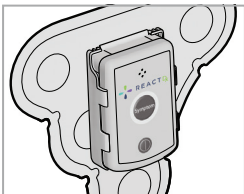
5 Insert Pendant
and Ensure
Pendant is **ON**.

! The Pendant is water-resistant, but not waterproof. You may shower with the Pendant on, but please do not submerge it.

Do's and Don'ts



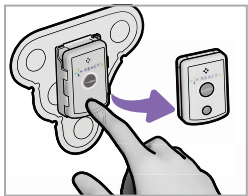
Wear Day and Night.



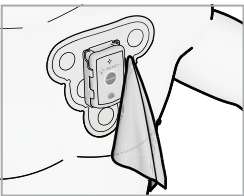
Fully Insert in Cradle.



Do Not Discard Pendant.



Turn Off Before
Changing Battery.



Dry Pendant and Patch.



Do Not Submerge.

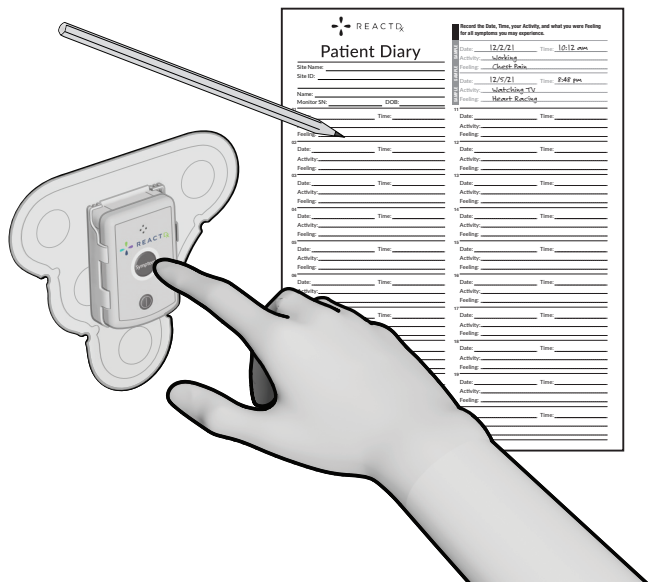


Return Promptly– Leave Kit for Mail Carrier to
Pick Up in any USPS Mailbox.



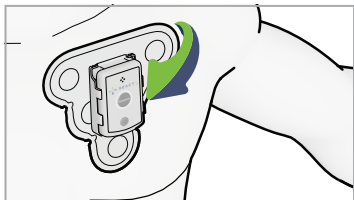
Do Not Move Patch
Over to Shoulder Area.

Making a Symptom Recording



- ! Remember: When you experience a symptom, **press the Symptom button. Record the date, time, what you were doing, and what you felt** for each symptom experienced in the **Patient Diary** or on a piece of paper that includes your name and date of birth. **Return your notes in the Kit promptly after the study is completed.**

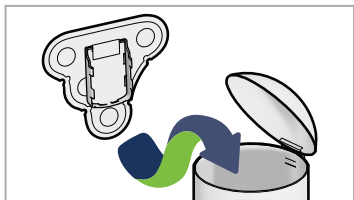
Procedure Ending Instructions



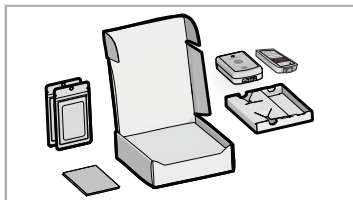
1 Remove the Patch with the Pendant from your Chest.



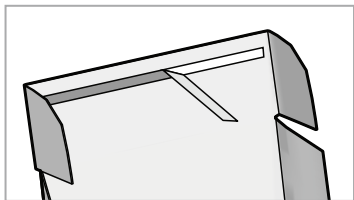
2 Remove the Pendant.



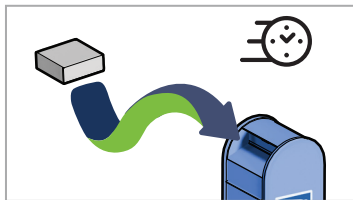
3 Discard the Patch Only.



4 Insert All Contents / Unused Supplies Back into the Box.



5 Close and Seal the Box.

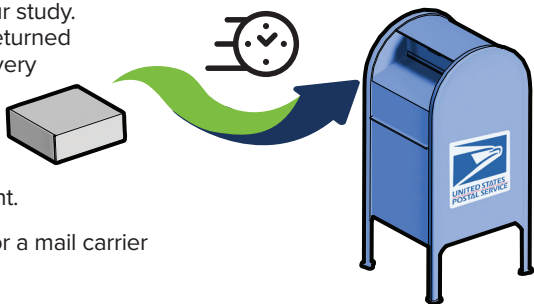


6 Promptly Leave for a Mail Carrier in any USPS Mailbox.

Returning the Monitor Kit

Return your Kit promptly so your doctor can finalize your study. Devices that are not returned could slow report delivery to your doctor, result in a bill for the unreturned equipment, and delay helping the next patient.

Leave the sealed kit for a mail carrier in any USPS mailbox.



Please take a moment to fill out the Patient survey at **[ReactDx.com/survey/](https://www.ReactDx.com/survey/)**. Your input will help us provide patients, like yourself, the best possible experience.



REACTDX
DIAGNOSTICS SIMPLIFIED

877-996-5553 • www.ReactDx.com • Info@ReactDx.com

©2023 Medicomp, Inc. dba ReactDx



QSGR000723-01