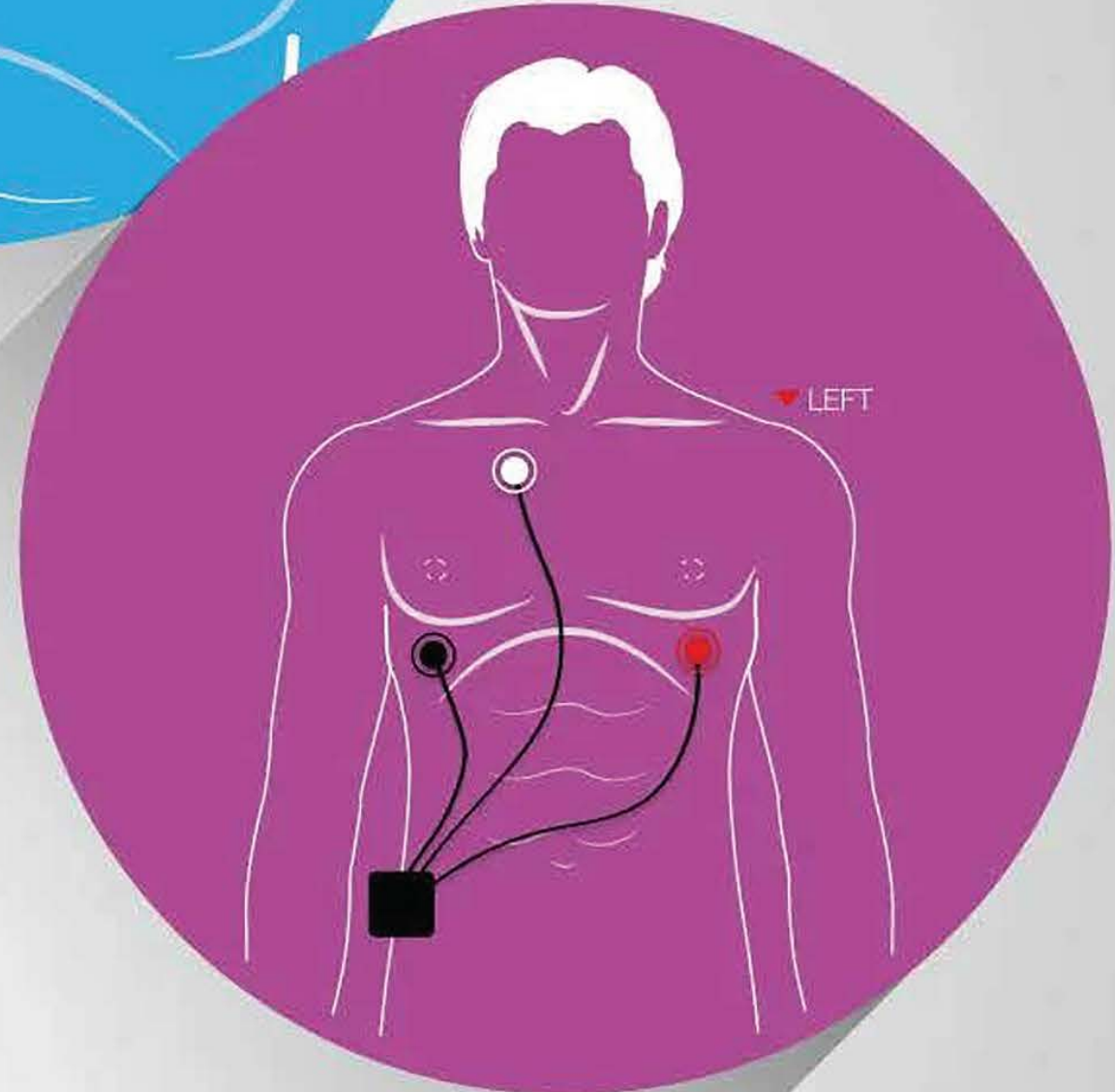
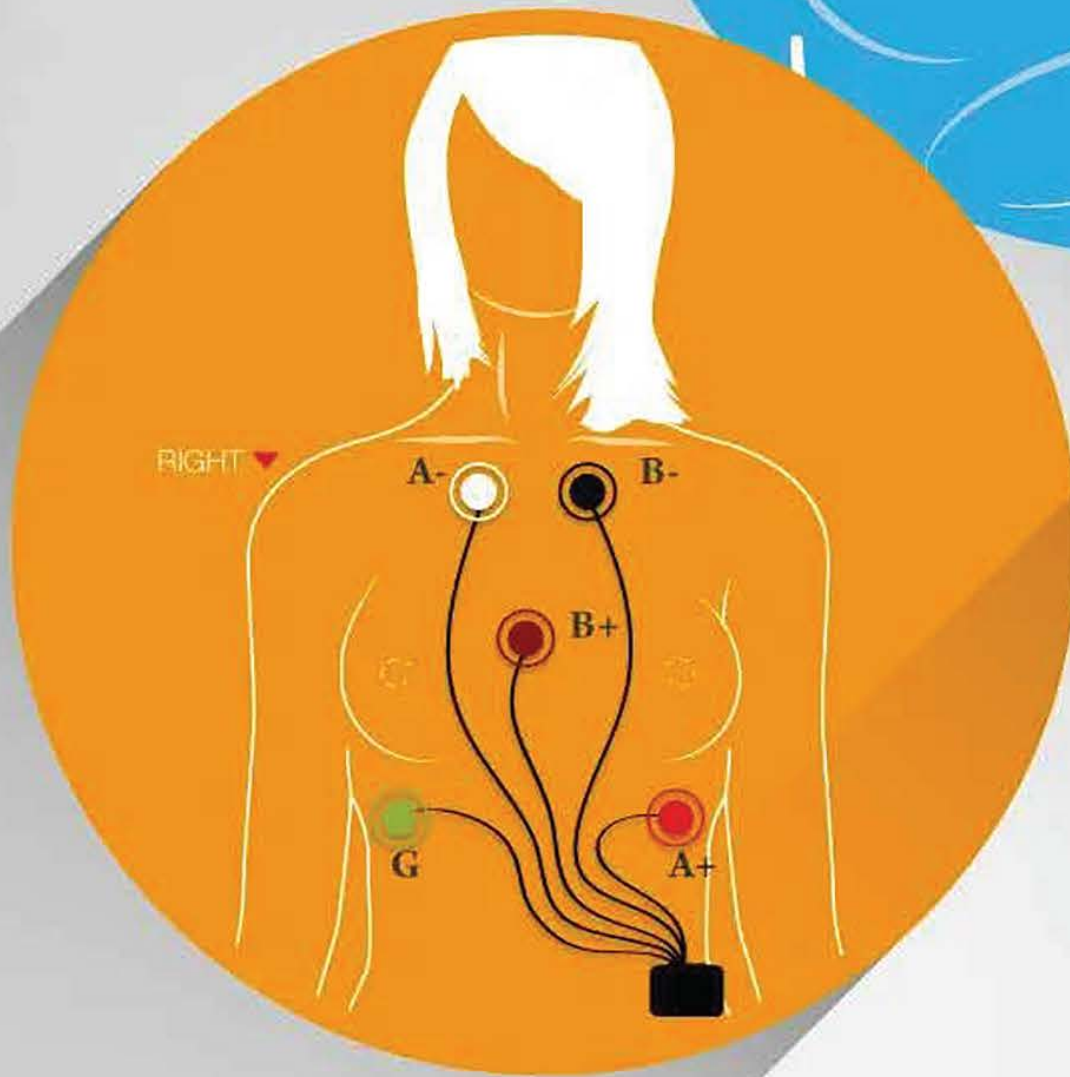
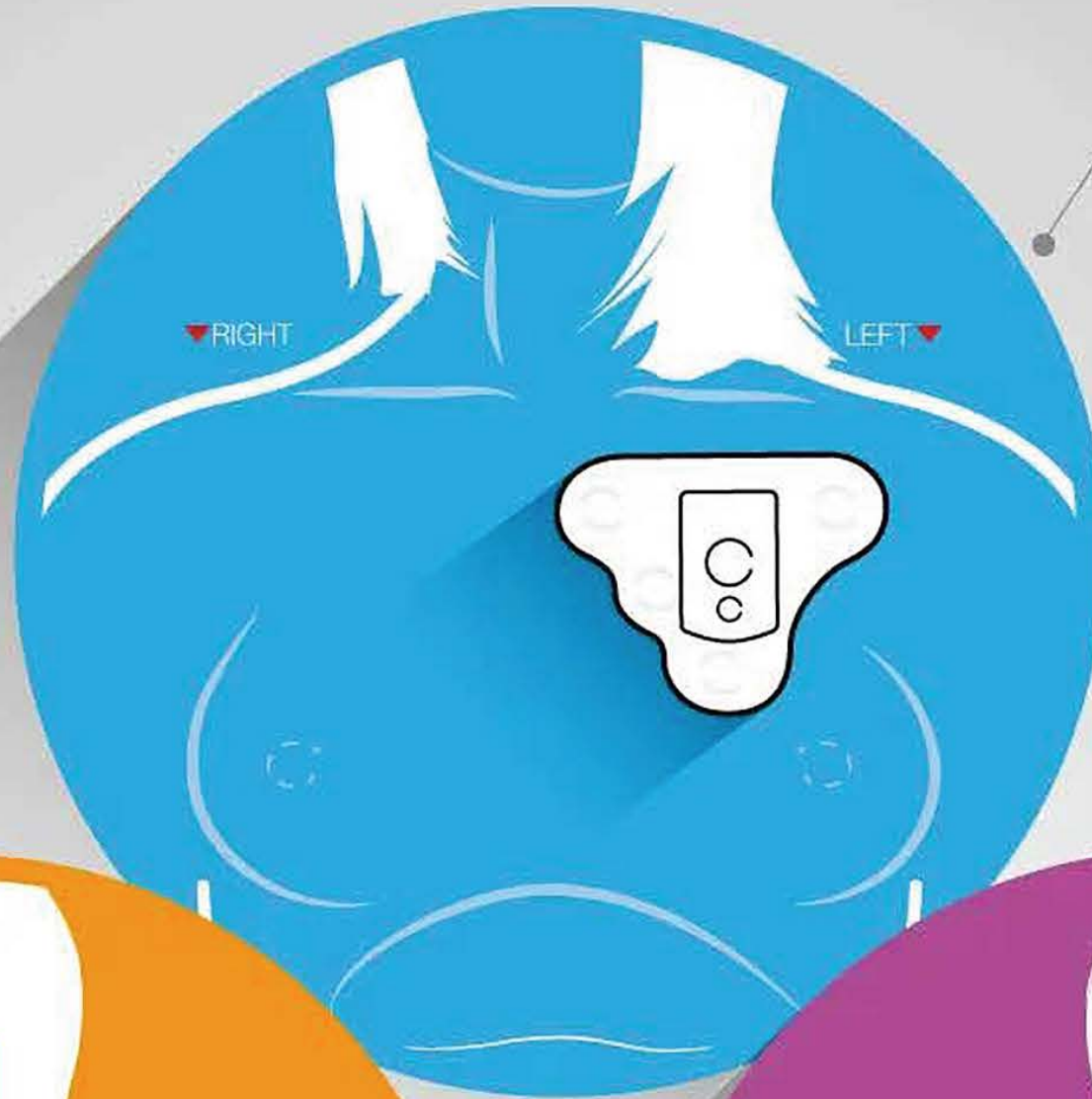


# CARDIAC MONITOR PATIENT HOOKUP

## TelePatch™

### Wireless Dual Channel

- LEFT side of chest
- Flat edge parallel to and one inch below collar bone
- About one inch left of breast bone



## Holter

### Wired Configuration

- Place the five colored electrodes as shown in illustration
- White electrode always on upper RIGHT side of chest

## Event & MCT

### Wired Configuration

- Place the three colored electrodes as shown in illustration
- White electrode always on upper RIGHT side of chest

## TelePatch™ Wireless Configuration



Find location    Shave/Prep    Insert pendant    Peel backing    Adhere to chest    Remove Tabs

## EVENT & MCT WIRED CONFIGURATION



Find location    Shave/Prep    Snap Electrodes    Peel backing    Adhere to chest

## NEED HELP? HAVE QUESTIONS?

Call: (877) 996-5553

Email: [CustomerSupport@ReactDx.com](mailto:CustomerSupport@ReactDx.com)

Visit: [www.ReactDx.com](http://www.ReactDx.com)

For updated product, service and HIPAA information, please visit our website:  
[www.ReactDx.com](http://www.ReactDx.com)

## PATIENT CENTER

Videos, How-To Guides, FAQs, Troubleshooting  
[ReactDx.com/Patients](http://ReactDx.com/Patients)

## ARRHYTHMIA ACCESS

Your Patient Management Portal  
Visit [ReactDx.com](http://ReactDx.com) and click Arrhythmia Access Log In.



**REACT**<sub>Dx</sub>  
DIAGNOSTICS SIMPLIFIED